

PPM1B Monoclonal Matched Antibody Pair, PBS Only

Catalog Number: **MP51322-1**

Capture Antibody Information

Catalog Number:
67647-1-PBS

Host:
Mouse

Isotype:
IgG1

Purification Method:
Protein G purification

Clone ID:
2C7H2

Reactivity:
human, mouse, rat

Immunogen Catalog Number:
Ag3871

Conjugate:
Unconjugated

Full name:
protein phosphatase 1B (formerly 2C),
magnesium-dependent, beta isoform

Gene ID:
5495

Detection Antibody Information

Catalog Number:
67647-2-PBS

Host:
Mouse

Isotype:
IgG1

Purification Method:
Protein G Magarose purification

Clone ID:
1G8E8

Reactivity:
human

GenBank:
BC012002

Immunogen Catalog Number:
Ag3871

Conjugate:
Unconjugated

Full name:
protein phosphatase 1B (formerly 2C),
magnesium-dependent, beta isoform

Gene ID:
5495

Applications

Tested Applications:
Cytometric bead array

Range:
0.195-200 ng/mL (Cytometric Bead Array)

Recommended Dilutions:
It is recommended that this reagent should be titrated in each testing system to obtain optimal results.

Product Information

MP51322-1 targets PPM1B in immunoassays as a matched antibody pair. Validated in Cytometric bead array.

Capture antibody: PPM1B Monoclonal antibody, PBS Only (Capture) 67647-1-PBS (2C7H2). 100 µg. Concentration 1 mg/mL.

Detection antibody: PPM1B Monoclonal antibody, PBS Only (Detector) 67647-2-PBS (1G8E8). 100 µg. Concentration 1 mg/mL.

Unconjugated mouse monoclonal antibody pair in PBS only storage buffer at a concentration of 1 mg/mL, ready for conjugation.

Matched antibody pairs are designed for use in a variety of assays and platforms that require matched antibody pairs.

Antibody use should be optimized for each application and assay.

Storage

Storage:
Store at -80°C.
Storage buffer:
PBS only

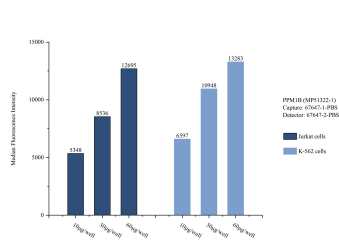
For technical support and original validation data for this product please contact:

T: 1 (888) 4PTGLAB (1-888-478-4522) (toll free in USA), or 1(312) 455-8498 (outside USA)

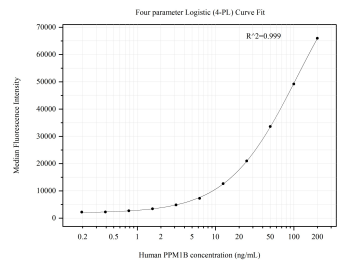
E: proteintech@ptglab.com
W: ptglab.com

This product is exclusively available under Proteintech Group brand and is not available to purchase from any other manufacturer.

Selected Validation Data



Sample test of MP51322-1, PPM1B Monoclonal Matched Antibody Pair, PBS Only. Capture antibody: 67647-1-PBS. Detection antibody: 67647-2-PBS.



Cytometric bead array standard curve of MP51322-1, PPM1B Monoclonal Matched Antibody Pair, PBS Only. Capture antibody: 67647-1-PBS. Detection antibody: 67647-2-PBS. Standard:Ag3871. Range: 0.195-200 ng/mL