

# PPM1B Monoclonal Matched Antibody Pair, PBS Only

Catalog Number: **MP51322-4**

## Capture Antibody Information

**Catalog Number:**  
67647-1-PBS  
**Host:**  
Mouse  
**Isotype:**  
IgG1  
**Purification Method:**  
Protein G purification

**Clone ID:**  
2C7H2  
**Reactivity:**  
human, mouse, rat  
**Immunogen Catalog Number:**  
Ag3871

**Conjugate:**  
Unconjugated  
**Full name:**  
protein phosphatase 1B (formerly 2C), magnesium-dependent, beta isoform  
**Gene ID:**  
5495

## Detection Antibody Information

**Catalog Number:**  
67647-5-PBS  
**Host:**  
Mouse  
**Isotype:**  
IgG1  
**Purification Method:**  
Protein G Magarose purification

**Clone ID:**  
1A9A2  
**Reactivity:**  
human  
**GenBank:**  
BC012002  
**Immunogen Catalog Number:**  
Ag3871

**Conjugate:**  
Unconjugated  
**Full name:**  
protein phosphatase 1B (formerly 2C), magnesium-dependent, beta isoform  
**Gene ID:**  
5495

## Applications

**Tested Applications:**  
Cytometric bead array

**Range:**  
0.195-200 ng/mL (Cytometric Bead Array)

**Recommended Dilutions:**  
It is recommended that this reagent should be titrated in each testing system to obtain optimal results.

## Product Information

MP51322-4 targets PPM1B in immunoassays as a matched antibody pair. Validated in Cytometric bead array.

Capture antibody: PPM1B Monoclonal antibody, PBS Only (Capture) 67647-1-PBS (2C7H2). 100 µg. Concentration 1 mg/mL.

Detection antibody: PPM1B Monoclonal antibody, PBS Only (Detector) 67647-5-PBS (1A9A2). 100 µg. Concentration 1 mg/mL.

Unconjugated mouse monoclonal antibody pair in PBS only storage buffer at a concentration of 1 mg/mL, ready for conjugation.

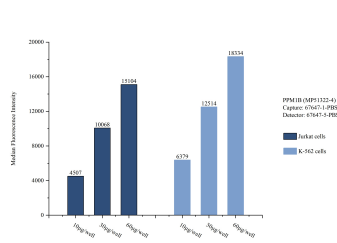
Matched antibody pairs are designed for use in a variety of assays and platforms that require matched antibody pairs.

Antibody use should be optimized for each application and assay.

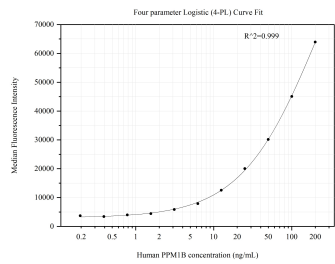
## Storage

**Storage:**  
Store at -80°C.  
**Storage buffer:**  
PBS only

# Selected Validation Data



Sample test of MP51322-4, PPM1B Monoclonal Matched Antibody Pair, PBS Only. Capture antibody: 67647-1-PBS. Detection antibody: 67647-5-PBS.



Cytometric bead array standard curve of MP51322-4, PPM1B Monoclonal Matched Antibody Pair, PBS Only. Capture antibody: 67647-1-PBS. Detection antibody: 67647-5-PBS. Standard:Ag3871. Range: 0.195-200 ng/mL