

For Research Use Only



# MAP1LC3B Monoclonal Matched Antibody Pair, PBS Only

Catalog Number:MP51338-1

## Capture Antibody Information

Catalog Number:  
60920-1-PBS  
Host:  
Mouse  
Isotype:  
IgG1  
Purification Method:  
Protein G purification

Clone ID:  
1C2E2  
Reactivity:  
human  
Immunogen Catalog Number:  
Ag6470

Conjugate:  
Unconjugated  
Full name:  
microtubule-associated protein 1  
light chain 3 beta  
Gene ID:  
81631

## Detection Antibody Information

Catalog Number:  
60920-2-PBS  
Host:  
Mouse  
Isotype:  
IgG1  
Purification Method:  
Protein G purification

Clone ID:  
1G5B2  
Reactivity:  
human  
GenBank:  
BC067797  
Immunogen Catalog Number:  
Ag6470

Conjugate:  
Unconjugated  
Full name:  
microtubule-associated protein 1  
light chain 3 beta  
Gene ID:  
81631

## Applications

Tested Applications:  
Cytometric bead array

Range:  
0.488-500 ng/mL (Cytometric Bead Array)

Recommended Dilutions:  
It is recommended that this reagent should be titrated in each testing system to obtain optimal results.

## Product Information

MP51338-1 targets MAP1LC3B in immunoassays as a matched antibody pair. Validated in Cytometric bead array.

Capture antibody: LC3 Monoclonal antibody, PBS Only (Capture) 60920-1-PBS (1C2E2). 100 µg. Concentration 1 mg/mL.

Detection antibody: LC3 Monoclonal antibody, PBS Only (Detector) 60920-2-PBS (1G5B2). 100 µg. Concentration 1 mg/mL.

Unconjugated mouse monoclonal antibody pair in PBS only storage buffer at a concentration of 1 mg/mL, ready for conjugation.

Matched antibody pairs are designed for use in a variety of assays and platforms that require matched antibody pairs.

Antibody use should be optimized for each application and assay.

## Storage

Storage:  
Store at -80°C.  
Storage buffer:  
PBS only

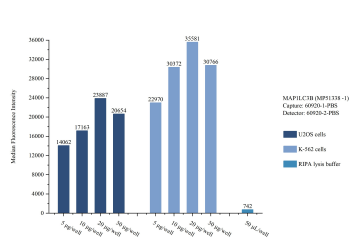
For technical support and original validation data for this product please contact:

T: 1 (888) 4PTGLAB (1-888-478-4522) (toll free in USA), or 1(312) 455-8498 (outside USA)

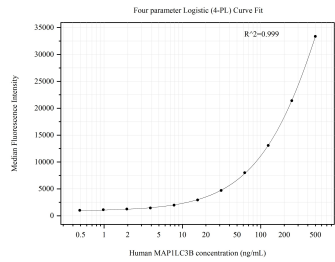
E: [proteintech@ptglab.com](mailto:proteintech@ptglab.com)  
W: [ptglab.com](http://ptglab.com)

This product is exclusively available under Proteintech Group brand and is not available to purchase from any other manufacturer.

Selected Validation Data



Sample test of MP51338-1, MAP1LC3B Monoclonal Matched Antibody Pair, PBS Only. Capture antibody: 60920-1-PBS. Detection antibody: 60920-2-PBS.



Cytometric bead array standard curve of MP51338-1, LC3 Monoclonal Matched Antibody Pair, PBS Only. Capture antibody: 60920-1-PBS. Detection antibody: 60920-2-PBS. Standard: Ag6470. Range: 0.488-500 ng/mL