

For Research Use Only

# RBP3 Monoclonal Matched Antibody Pair, PBS Only



Catalog Number:MP51339-1

## Capture Antibody Information

Catalog Number:

60921-1-PBS

Host:

Mouse

Isotype:

IgG1

Purification Method:

Protein G purification

Clone ID:

1C8D10

Reactivity:

human

Immunogen Catalog Number:

Ag6182

Conjugate:

Unconjugated

Full name:

retinol binding protein 3, interstitial

Gene ID:

5949

## Detection Antibody Information

Catalog Number:

60921-2-PBS

Host:

Mouse

Isotype:

IgG1

Purification Method:

Protein G Magarose purification

Clone ID:

1A10C10

Reactivity:

human

GenBank:

BC039844

Immunogen Catalog Number:

Ag6182

Conjugate:

Unconjugated

Full name:

retinol binding protein 3, interstitial

Gene ID:

5949

## Applications

Tested Applications:

Cytometric bead array

Range:

0.391-400 ng/mL (Cytometric Bead Array)

Recommended Dilutions:

It is recommended that this reagent should be titrated in each testing system to obtain optimal results.

## Product Information

MP51339-1 targets RBP3 in immunoassays as a matched antibody pair. Validated in Cytometric bead array.

Capture antibody: RBP3 Monoclonal antibody, PBS Only (Capture) 60921-1-PBS (1C8D10). 100 µg. Concentration 1 mg/mL.

Detection antibody: RBP3 Monoclonal antibody, PBS Only (Detector) 60921-2-PBS (1A10C10). 100 µg. Concentration 1 mg/mL.

Unconjugated mouse monoclonal antibody pair in PBS only storage buffer at a concentration of 1 mg/mL, ready for conjugation.

Matched antibody pairs are designed for use in a variety of assays and platforms that require matched antibody pairs.

Antibody use should be optimized for each application and assay.

## Storage

Storage:

Store at -80°C.

Storage buffer:

PBS only

For technical support and original validation data for this product please contact:

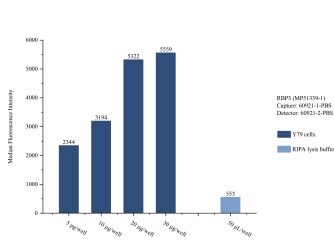
T: 1 (888) 4PTGLAB (1-888-478-4522) (toll free in USA), or 1(312) 455-8498 (outside USA)

E: [proteintech@ptglab.com](mailto:proteintech@ptglab.com)

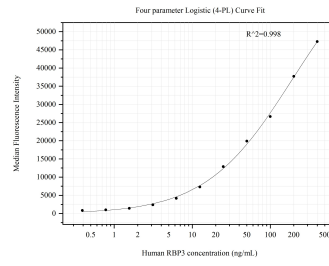
W: [ptglab.com](http://ptglab.com)

This product is exclusively available under Proteintech Group brand and is not available to purchase from any other manufacturer.

## Selected Validation Data



Sample test of MP51339-1, RBP3 Monoclonal Matched Antibody Pair, PBS Only. Capture antibody: 60921-1-PBS. Detection antibody: 60921-2-PBS.



Cytometric bead array standard curve of MP51339-1, RBP3 Monoclonal Matched Antibody Pair, PBS Only. Capture antibody: 60921-1-PBS. Detection antibody: 60921-2-PBS. Standard: Ag6182. Range: 0.391-400 ng/mL.