

KIAA0494 Monoclonal Matched Antibody Pair, PBS Only

Catalog Number: **MP51343-1**

Capture Antibody Information

Catalog Number:
60924-1-PBS

Host:
Mouse

Isotype:
IgG2a

Purification Method:
Protein A Magarose purification

Clone ID:
1F5E5

Reactivity:
human

Immunogen Catalog Number:
Ag33197

Conjugate:
Unconjugated

Full name:
KIAA0494

Gene ID:
9813

Detection Antibody Information

Catalog Number:
60924-2-PBS

Host:
Mouse

Isotype:
IgG1

Purification Method:
Protein G Magarose purification

Clone ID:
1H1B5

Reactivity:
human

GenBank:
BC002525

Immunogen Catalog Number:
Ag33197

Conjugate:
Unconjugated

Full name:
KIAA0494

Gene ID:
9813

Applications

Tested Applications:
Cytometric bead array

Range:
0.391-400 ng/mL (Cytometric Bead Array)

Recommended Dilutions:
It is recommended that this reagent should be titrated in each testing system to obtain optimal results.

Product Information

MP51343-1 targets KIAA0494 in immunoassays as a matched antibody pair. Validated in Cytometric bead array.

Capture antibody: KIAA0494 Monoclonal antibody, PBS Only (Capture) 60924-1-PBS (1F5E5). 100 µg. Concentration 1 mg/mL.

Detection antibody: KIAA0494 Monoclonal antibody, PBS Only (Detector) 60924-2-PBS (1H1B5). 100 µg. Concentration 1 mg/mL.

Unconjugated mouse monoclonal antibody pair in PBS only storage buffer at a concentration of 1 mg/mL, ready for conjugation.

Matched antibody pairs are designed for use in a variety of assays and platforms that require matched antibody pairs.

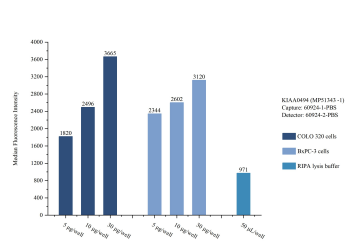
Antibody use should be optimized for each application and assay.

Storage

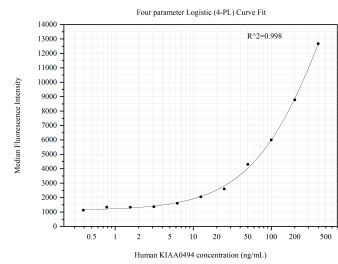
Storage:
Store at -80°C.

Storage buffer:
PBS only

Selected Validation Data



Sample test of MP51343-1, KIAA0494 Monoclonal Matched Antibody Pair, PBS Only. Capture antibody: 60924-1-PBS. Detection antibody: 60924-2-PBS.



Cytometric bead array standard curve of MP51343-1, KIAA0494 Monoclonal Matched Antibody Pair, PBS Only. Capture antibody: 60924-1-PBS. Detection antibody: 60924-2-PBS. Standard:Ag33197. Range: 0.391-400 ng/mL.