

For Research Use Only

# GCLC Monoclonal Matched Antibody Pair, PBS Only



Catalog Number:MP51345-1

## Capture Antibody Information

**Catalog Number:**  
60926-1-PBS  
**Host:**  
Mouse  
**Isotype:**  
IgG1  
**Purification Method:**  
Protein G Magarose purification

**Clone ID:**  
1B9D4  
**Reactivity:**  
human  
**Immunogen Catalog Number:**  
Ag18847

**Conjugate:**  
Unconjugated  
**Full name:**  
glutamate-cysteine ligase, catalytic subunit  
**Gene ID:**  
2729

## Detection Antibody Information

**Catalog Number:**  
60926-2-PBS  
**Host:**  
Mouse  
**Isotype:**  
IgG1  
**Purification Method:**  
Protein G Magarose purification

**Clone ID:**  
3C7C11  
**Reactivity:**  
human  
**GenBank:**  
BC022487  
**Immunogen Catalog Number:**  
Ag18847

**Conjugate:**  
Unconjugated  
**Full name:**  
glutamate-cysteine ligase, catalytic subunit  
**Gene ID:**  
2729

## Applications

**Tested Applications:**  
Cytometric bead array

**Range:**  
1.563-400 ng/mL (Cytometric Bead Array)

**Recommended Dilutions:**  
It is recommended that this reagent should be titrated in each testing system to obtain optimal results.

## Product Information

MP51345-1 targets GCLC in immunoassays as a matched antibody pair. Validated in Cytometric bead array.

Capture antibody: GCLC Monoclonal antibody, PBS Only (Capture) 60926-1-PBS (1B9D4). 100 µg. Concentration 1 mg/mL.

Detection antibody: GCLC Monoclonal antibody, PBS Only (Detector) 60926-2-PBS (3C7C11). 100 µg. Concentration 1 mg/mL.

Unconjugated mouse monoclonal antibody pair in PBS only storage buffer at a concentration of 1 mg/mL, ready for conjugation.

Matched antibody pairs are designed for use in a variety of assays and platforms that require matched antibody pairs.

Antibody use should be optimized for each application and assay.

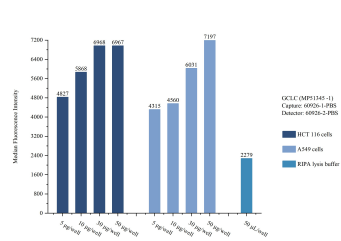
## Storage

**Storage:**  
Store at -80°C.  
**Storage buffer:**  
PBS only

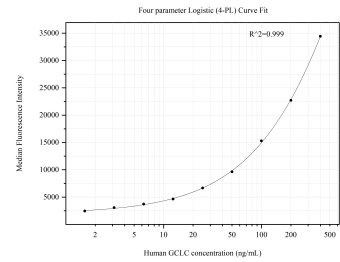
For technical support and original validation data for this product please contact:  
T: 1 (888) 4PTGLAB (1-888-478-4522) (toll free in USA), or 1(312) 455-8498 (outside USA)  
E: [proteintech@ptglab.com](mailto:proteintech@ptglab.com)  
W: [ptglab.com](http://ptglab.com)

This product is exclusively available under Proteintech Group brand and is not available to purchase from any other manufacturer.

# Selected Validation Data



Sample test of MP51345-1, GCLC Monoclonal Matched Antibody Pair, PBS Only. Capture antibody: 60926-1-PBS. Detection antibody: 60926-2-PBS.



Cytometric bead array standard curve of MP51345-1, GCLC Monoclonal Matched Antibody Pair, PBS Only. Capture antibody: 60926-1-PBS. Detection antibody: 60926-2-PBS. Standard:Ag18847. Range: 1.563-400 ng/mL.