

For Research Use Only

FGF1 Monoclonal Matched Antibody Pair, PBS Only



Catalog Number:MP51346-1

Capture Antibody Information

Catalog Number:
60927-1-PBS
Host:
Mouse
Isotype:
IgG1
Purification Method:
Protein G purification

Clone ID:
2C9A1
Reactivity:
human
Immunogen Catalog Number:
Ag11672

Conjugate:
Unconjugated
Full name:
fibroblast growth factor 1 (acidic)
Gene ID:
2246

Detection Antibody Information

Catalog Number:
60927-2-PBS
Host:
Mouse
Isotype:
IgG1
Purification Method:
Protein G purification

Clone ID:
1C1B1
Reactivity:
human
GenBank:
BC032697
Immunogen Catalog Number:
Ag11672

Conjugate:
Unconjugated
Full name:
fibroblast growth factor 1 (acidic)
Gene ID:
2246

Applications

Tested Applications:
Cytometric bead array

Range:
0.391-400 ng/mL (Cytometric Bead Array)

Recommended Dilutions:
It is recommended that this reagent should be titrated in each testing system to obtain optimal results.

Product Information

MP51346-1 targets FGF1 in immunoassays as a matched antibody pair. Validated in Cytometric bead array.

Capture antibody: FGF1 Monoclonal antibody, PBS Only (Capture) 60927-1-PBS (2C9A1). 100 µg. Concentration 1 mg/mL.

Detection antibody: FGF1 Monoclonal antibody, PBS Only (Detector) 60927-2-PBS (1C1B1). 100 µg. Concentration 1 mg/mL.

Unconjugated mouse monoclonal antibody pair in PBS only storage buffer at a concentration of 1 mg/mL, ready for conjugation.

Matched antibody pairs are designed for use in a variety of assays and platforms that require matched antibody pairs.

Antibody use should be optimized for each application and assay.

Storage

Storage:
Store at -80°C.
Storage buffer:
PBS only

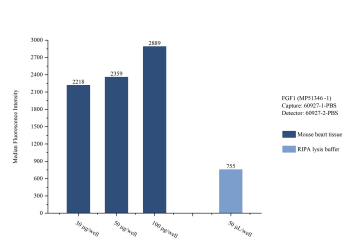
For technical support and original validation data for this product please contact:

T: 1 (888) 4PTGLAB (1-888-478-4522) (toll free in USA), or 1(312) 455-8498 (outside USA)

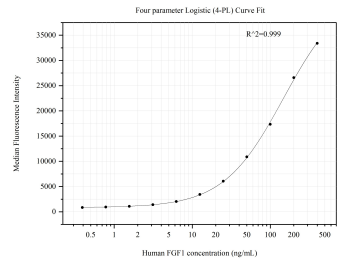
E: proteintech@ptglab.com
W: ptglab.com

This product is exclusively available under Proteintech Group brand and is not available to purchase from any other manufacturer.

Selected Validation Data



Sample test of MP51346-1, FGF1 Monoclonal Matched Antibody Pair, PBS Only. Capture antibody: 60927-1-PBS. Detection antibody: 60927-2-PBS.



Cytometric bead array standard curve of MP51346-1, FGF1 Monoclonal Matched Antibody Pair, PBS Only. Capture antibody: 60927-1-PBS. Detection antibody: 60927-2-PBS. Standard: Ag11672. Range: 0.391-400 ng/mL