

# CRCP Monoclonal Matched Antibody Pair, PBS Only

Catalog Number: **MP51347-1**

## Capture Antibody Information

**Catalog Number:**  
60928-1-PBS  
**Host:**  
Mouse  
**Isotype:**  
IgG1  
**Purification Method:**  
Protein G purification

**Clone ID:**  
1H4F9  
**Reactivity:**  
human  
**Immunogen Catalog Number:**  
Ag5689

**Conjugate:**  
Unconjugated  
**Full name:**  
CGRP receptor component  
**Gene ID:**  
27297

## Detection Antibody Information

**Catalog Number:**  
60928-2-PBS  
**Host:**  
Mouse  
**Isotype:**  
IgG1  
**Purification Method:**  
Protein G Magarose purification

**Clone ID:**  
2G11G1  
**Reactivity:**  
human  
**GenBank:**  
BC040107  
**Immunogen Catalog Number:**  
Ag6177

**Conjugate:**  
Unconjugated  
**Full name:**  
CGRP receptor component  
**Gene ID:**  
27297

## Applications

**Tested Applications:**  
Cytometric bead array

**Range:**  
0.391-400 ng/mL (Cytometric Bead Array)

**Recommended Dilutions:**  
It is recommended that this reagent should be titrated in each testing system to obtain optimal results.

## Product Information

MP51347-1 targets CRCP in immunoassays as a matched antibody pair. Validated in Cytometric bead array.

Capture antibody: CRCP Monoclonal antibody, PBS Only (Capture) 60928-1-PBS (1H4F9). 100 µg. Concentration 1 mg/mL.

Detection antibody: CRCP Monoclonal antibody, PBS Only (Detector) 60928-2-PBS (2G11G1). 100 µg. Concentration 1 mg/mL.

Unconjugated mouse monoclonal antibody pair in PBS only storage buffer at a concentration of 1 mg/mL, ready for conjugation.

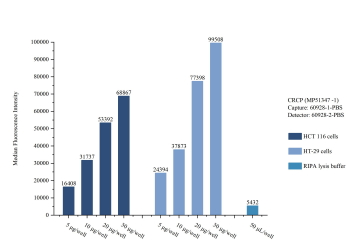
Matched antibody pairs are designed for use in a variety of assays and platforms that require matched antibody pairs.

Antibody use should be optimized for each application and assay.

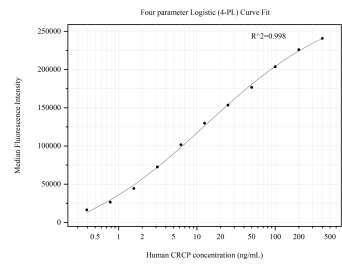
## Storage

**Storage:**  
Store at -80°C.  
**Storage buffer:**  
PBS only

Selected Validation Data



Sample test of MP51347-1, CRCP Monoclonal Matched Antibody Pair, PBS Only. Capture antibody: 60928-1-PBS. Detection antibody: 60928-2-PBS.



Cytometric bead array standard curve of MP51347-1, CRCP Monoclonal Matched Antibody Pair, PBS Only. Capture antibody: 60928-1-PBS. Detection antibody: 60928-2-PBS. Standard:Ag5689. Range: 0.391-400 ng/mL