

For Research Use Only



# SMARCAL1 Monoclonal Matched Antibody Pair, PBS Only

Catalog Number:MP51350-1

## Capture Antibody Information

**Catalog Number:**  
60933-1-PBS  
**Host:**  
Mouse  
**Isotype:**  
IgG1  
**Purification Method:**  
Protein G Magarose purification

**Clone ID:**  
3H2F4  
**Reactivity:**  
human  
**Immunogen Catalog Number:**  
Ag23707

**Conjugate:**  
Unconjugated  
**Full name:**  
SWI/SNF related, matrix associated, actin dependent regulator of chromatin, subfamily a-like 1  
**Gene ID:**  
50485

## Detection Antibody Information

**Catalog Number:**  
60933-2-PBS  
**Host:**  
Mouse  
**Isotype:**  
IgG1  
**Purification Method:**  
Protein G Magarose purification

**Clone ID:**  
2C10E2  
**Reactivity:**  
human  
**GenBank:**  
BC016482  
**Immunogen Catalog Number:**  
Ag23707

**Conjugate:**  
Unconjugated  
**Full name:**  
SWI/SNF related, matrix associated, actin dependent regulator of chromatin, subfamily a-like 1  
**Gene ID:**  
50485

## Applications

**Tested Applications:**  
Cytometric bead array

**Range:**  
0.098-100 ng/mL (Cytometric Bead Array)

**Recommended Dilutions:**  
It is recommended that this reagent should be titrated in each testing system to obtain optimal results.

## Product Information

MP51350-1 targets SMARCAL1 in immunoassays as a matched antibody pair. Validated in Cytometric bead array.

Capture antibody: SMARCAL1 Monoclonal antibody, PBS Only (Capture) 60933-1-PBS (3H2F4). 100 µg. Concentration 1 mg/mL.

Detection antibody: SMARCAL1 Monoclonal antibody, PBS Only (Detector) 60933-2-PBS (2C10E2). 100 µg. Concentration 1 mg/mL.

Unconjugated mouse monoclonal antibody pair in PBS only storage buffer at a concentration of 1 mg/mL, ready for conjugation.

Matched antibody pairs are designed for use in a variety of assays and platforms that require matched antibody pairs.

Antibody use should be optimized for each application and assay.

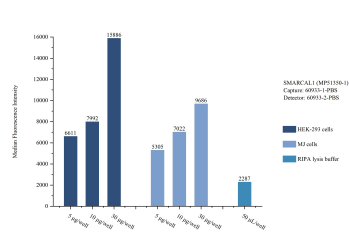
## Storage

**Storage:**  
Store at -80°C.  
**Storage buffer:**  
PBS only

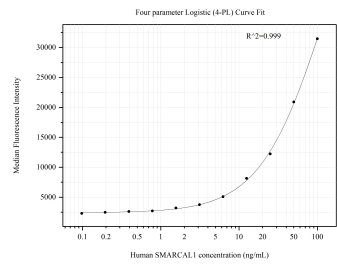
For technical support and original validation data for this product please contact:  
T: 1 (888) 4PTGLAB (1-888-478-4522) (toll free in USA), or 1(312) 455-8498 (outside USA) E: [proteintech@ptglab.com](mailto:proteintech@ptglab.com) W: [ptglab.com](http://ptglab.com)

This product is exclusively available under Proteintech Group brand and is not available to purchase from any other manufacturer.

# Selected Validation Data



Sample test of MP51350-1, SMARCAL1 Monoclonal Matched Antibody Pair, PBS Only. Capture antibody: 60933-1-PBS. Detection antibody: 60933-2-PBS.



Cytometric bead array standard curve of MP51350-1, SMARCAL1 Monoclonal Matched Antibody Pair, PBS Only. Capture antibody: 60933-1-PBS. Detection antibody: 60933-2-PBS. Standard:Ag23707. Range: 0.098-100 ng/mL.