

# MAP1LC3A,LC3 Monoclonal Matched Antibody Pair, PBS Only

Catalog Number: **MP51371-1**

## Capture Antibody Information

**Catalog Number:**  
66139-4-PBS  
**Host:**  
Mouse  
**Isotype:**  
IgG1  
**Purification Method:**  
Protein G purification

**Clone ID:**  
1B5H5  
**Reactivity:**  
human  
**Immunogen Catalog Number:**  
Ag17959

**Conjugate:**  
Unconjugated  
**Full name:**  
microtubule-associated protein 1 light chain 3 alpha  
**Gene ID:**  
84557

## Detection Antibody Information

**Catalog Number:**  
66139-5-PBS  
**Host:**  
Mouse  
**Isotype:**  
IgG1  
**Purification Method:**  
Protein G purification

**Clone ID:**  
2A4G9  
**Reactivity:**  
human  
**GenBank:**  
BC015810  
**Immunogen Catalog Number:**  
Ag17959

**Conjugate:**  
Unconjugated  
**Full name:**  
microtubule-associated protein 1 light chain 3 alpha  
**Gene ID:**  
84557

## Applications

**Tested Applications:**  
Cytometric bead array

**Range:**  
0.391-400 ng/mL (Cytometric Bead Array)

**Recommended Dilutions:**  
It is recommended that this reagent should be titrated in each testing system to obtain optimal results.

## Product Information

MP51371-1 targets MAP1LC3A,LC3 in immunoassays as a matched antibody pair. Validated in Cytometric bead array.

Capture antibody: MAP1LC3A,LC3 Monoclonal antibody, PBS Only (Capture) 66139-4-PBS (1B5H5). 100 µg. Concentration 1 mg/mL.

Detection antibody: MAP1LC3A,LC3 Monoclonal antibody, PBS Only (Detector) 66139-5-PBS (2A4G9). 100 µg. Concentration 1 mg/mL.

Unconjugated mouse monoclonal antibody pair in PBS only storage buffer at a concentration of 1 mg/mL, ready for conjugation.

Matched antibody pairs are designed for use in a variety of assays and platforms that require matched antibody pairs.

Antibody use should be optimized for each application and assay.

## Storage

**Storage:**  
Store at -80°C.  
**Storage buffer:**  
PBS only

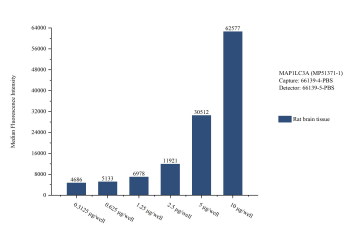
For technical support and original validation data for this product please contact:

T: 1 (888) 4PTGLAB (1-888-478-4522) (toll free in USA), or 1(312) 455-8498 (outside USA)

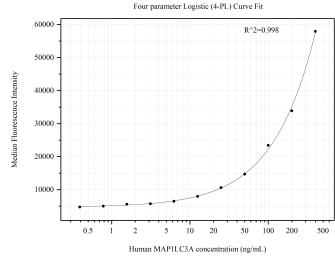
E: [proteintech@ptglab.com](mailto:proteintech@ptglab.com)  
W: [ptglab.com](http://ptglab.com)

**This product is exclusively available under Proteintech Group brand and is not available to purchase from any other manufacturer.**

Selected Validation Data



Sample test of MP51371-1, MAP1LC3A,LC3 Monoclonal Matched Antibody Pair, PBS Only. Capture antibody: 66139-4-PBS. Detection antibody: 66139-5-PBS.



Cytometric bead array standard curve of MP51371-1, MAP1LC3A,LC3 Monoclonal Matched Antibody Pair, PBS Only. Capture antibody: 66139-4-PBS. Detection antibody: 66139-5-PBS. Standard:Ag17959. Range: 0.391-400 ng/mL.