

For Research Use Only

SLC1A2 Monoclonal Matched Antibody Pair, PBS Only

Catalog Number: **MP51374-1**

Capture Antibody Information

Catalog Number:
67083-2-PBS

Host:
Mouse

Isotype:
IgG1

Purification Method:
Protein G purification

Clone ID:
2H8B6

Reactivity:
human

Immunogen Catalog Number:
Ag19816

Conjugate:
Unconjugated

Full name:
solute carrier family 1 (glial high affinity glutamate transporter), member 2

Gene ID:
6506

Detection Antibody Information

Catalog Number:
67083-1-PBS

Host:
Mouse

Isotype:
IgG1

Purification Method:
Protein G purification

Clone ID:
1C8D10

Reactivity:
human, mouse, rat

GenBank:
BC132768

Immunogen Catalog Number:
Ag19816

Conjugate:
Unconjugated

Full name:
solute carrier family 1 (glial high affinity glutamate transporter), member 2

Gene ID:
6506

Applications

Tested Applications:
Cytometric bead array

Range:
0.098-100 ng/mL (Cytometric Bead Array)

Recommended Dilutions:
It is recommended that this reagent should be titrated in each testing system to obtain optimal results.

Product Information

MP51374-1 targets SLC1A2 in immunoassays as a matched antibody pair. Validated in Cytometric bead array.

Capture antibody: SLC1A2 Monoclonal antibody, PBS Only (Capture) 67083-2-PBS (2H8B6). 100 µg. Concentration 1 mg/mL.

Detection antibody: EAAT2 Monoclonal antibody, PBS Only (Detector) 67083-1-PBS (1C8D10). 100 µg. Concentration 1 mg/mL.

Unconjugated mouse monoclonal antibody pair in PBS only storage buffer at a concentration of 1 mg/mL, ready for conjugation.

Matched antibody pairs are designed for use in a variety of assays and platforms that require matched antibody pairs.

Antibody use should be optimized for each application and assay.

Storage

Storage:
Store at -80°C.
Storage buffer:
PBS only

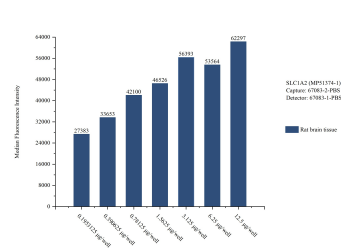
For technical support and original validation data for this product please contact:

T: 1 (888) 4PTGLAB (1-888-478-4522) (toll free in USA), or 1(312) 455-8498 (outside USA)

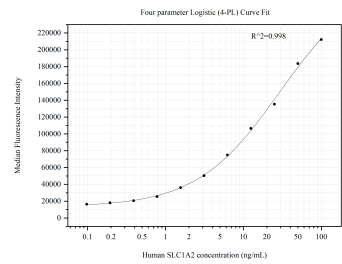
E: proteintech@ptglab.com
W: ptglab.com

This product is exclusively available under Proteintech Group brand and is not available to purchase from any other manufacturer.

Selected Validation Data



Sample test of MP51374-1, SLC1A2 Monoclonal Matched Antibody Pair, PBS Only. Capture antibody: 67083-2-PBS. Detection antibody: 67083-1-PBS.



Cytometric bead array standard curve of MP51374-1, SLC1A2 Monoclonal Matched Antibody Pair, PBS Only. Capture antibody: 67083-2-PBS. Detection antibody: 67083-1-PBS. Standard:Ag19816. Range: 0.098-100 ng/mL.