

# DTX2 Monoclonal Matched Antibody Pair, PBS Only

Catalog Number: **MP51381-1**

## Capture Antibody Information

**Catalog Number:**  
67209-1-PBS  
**Host:**  
Mouse  
**Isotype:**  
IgG2a  
**Purification Method:**  
Protein A purification

**Clone ID:**  
2D4F8  
**Reactivity:**  
human  
**Immunogen Catalog Number:**  
Ag12022

**Conjugate:**  
Unconjugated  
**Full name:**  
deltex homolog 2 (Drosophila)  
**Gene ID:**  
113878

## Detection Antibody Information

**Catalog Number:**  
67209-2-PBS  
**Host:**  
Mouse  
**Isotype:**  
IgG2b  
**Purification Method:**  
Protein A purification

**Clone ID:**  
1B8E2  
**Reactivity:**  
human  
**GenBank:**  
BC064535  
**Immunogen Catalog Number:**  
Ag12022

**Conjugate:**  
Unconjugated  
**Full name:**  
deltex homolog 2 (Drosophila)  
**Gene ID:**  
113878

## Applications

**Tested Applications:**  
Cytometric bead array

**Range:**  
3.125-400 ng/mL (Cytometric Bead Array)

**Recommended Dilutions:**  
It is recommended that this reagent should be titrated in each testing system to obtain optimal results.

## Product Information

MP51381-1 targets DTX2 in immunoassays as a matched antibody pair. Validated in Cytometric bead array.

Capture antibody: DTX2 Monoclonal antibody, PBS Only (Capture) 67209-1-PBS (2D4F8). 100 µg. Concentration 1 mg/mL.

Detection antibody: DTX2 Monoclonal antibody, PBS Only (Detector) 67209-2-PBS (1B8E2). 100 µg. Concentration 1 mg/mL.

Unconjugated mouse monoclonal antibody pair in PBS only storage buffer at a concentration of 1 mg/mL, ready for conjugation.

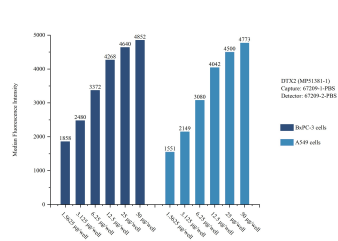
Matched antibody pairs are designed for use in a variety of assays and platforms that require matched antibody pairs.

Antibody use should be optimized for each application and assay.

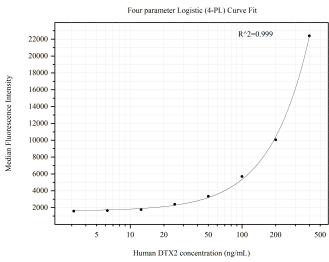
## Storage

**Storage:**  
Store at -80°C.  
**Storage buffer:**  
PBS only

# Selected Validation Data



Sample test of MP51381-1, DTX2 Monoclonal Matched Antibody Pair, PBS Only. Capture antibody: 67209-1-PBS. Detection antibody: 67209-2-PBS.



Cytometric bead array standard curve of MP51381-1, DTX2 Monoclonal Matched Antibody Pair, PBS Only. Capture antibody: 67209-1-PBS. Detection antibody: 67209-2-PBS. Standard:Ag12022. Range: 3.125-400 ng/mL.