

For Research Use Only

LYVE1 Monoclonal Matched Antibody Pair, PBS Only



Catalog Number:MP51407-1

Capture Antibody Information

Catalog Number:
60976-1-PBS
Host:
Mouse
Isotype:
IgG1
Purification Method:
Protein G Magarose purification

Clone ID:
4E4D2
Reactivity:
human
Immunogen Catalog Number:
Ag0570

Conjugate:
Unconjugated
Full name:
lymphatic vessel endothelial
hyaluronan receptor 1
Gene ID:
10894

Detection Antibody Information

Catalog Number:
60976-2-PBS
Host:
Mouse
Isotype:
IgG1
Purification Method:
Protein G Magarose purification

Clone ID:
3F1D11
Reactivity:
human
GenBank:
BC026231
Immunogen Catalog Number:
Ag0570

Conjugate:
Unconjugated
Full name:
lymphatic vessel endothelial
hyaluronan receptor 1
Gene ID:
10894

Applications

Tested Applications:
Cytometric bead array

Range:
0.781-200 ng/mL (Cytometric Bead Array)

Recommended Dilutions:
It is recommended that this reagent should be titrated in each testing system to obtain optimal results.

Product Information

MP51407-1 targets LYVE1 in immunoassays as a matched antibody pair. Validated in Cytometric bead array.

Capture antibody: LYVE1 Monoclonal antibody, PBS Only (Capture) 60976-1-PBS (4E4D2). 100 µg. Concentration 1 mg/mL.

Detection antibody: LYVE1 Monoclonal antibody, PBS Only (Detector) 60976-2-PBS (3F1D11). 100 µg. Concentration 1 mg/mL.

Unconjugated mouse monoclonal antibody pair in PBS only storage buffer at a concentration of 1 mg/mL, ready for conjugation.

Matched antibody pairs are designed for use in a variety of assays and platforms that require matched antibody pairs.

Antibody use should be optimized for each application and assay.

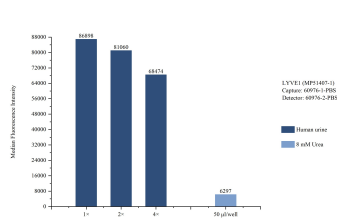
Storage

Storage:
Store at -80°C.
Storage buffer:
PBS only

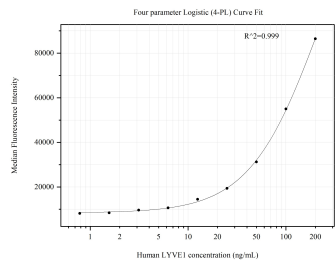
For technical support and original validation data for this product please contact:
T: 1 (888) 4PTGLAB (1-888-478-4522) (toll free in USA), or 1(312) 455-8498 (outside USA)
E: proteintech@ptglab.com
W: ptglab.com

This product is exclusively available under Proteintech Group brand and is not available to purchase from any other manufacturer.

Selected Validation Data



Sample test of MP51407-1, LYVE1 Monoclonal Matched Antibody Pair, PBS Only. Capture antibody: 60976-1-PBS. Detection antibody: 60976-2-PBS.



Cytometric bead array standard curve of MP51407-1, LYVE1 Monoclonal Matched Antibody Pair, PBS Only. Capture antibody: 60976-1-PBS. Detection antibody: 60976-2-PBS. Standard:Ag0570. Range: 0.781-200 ng/mL