

For Research Use Only

# GMFG Monoclonal Matched Antibody Pair, PBS Only



Catalog Number:MP51410-1

## Capture Antibody Information

Catalog Number:  
60941-2-PBS

Host:  
Mouse

Isotype:  
IgG1

Purification Method:  
Protein G purification

Clone ID:  
2G8B4

Reactivity:  
human

Immunogen Catalog Number:  
Ag4538

Conjugate:  
Unconjugated

Full name:  
glia maturation factor, gamma

Gene ID:  
9535

## Detection Antibody Information

Catalog Number:  
60941-3-PBS

Host:  
Mouse

Isotype:  
IgG3

Purification Method:  
Protein A purification

Clone ID:  
1D12C8

Reactivity:  
human

GenBank:  
BC032819

Immunogen Catalog Number:  
Ag4538

Conjugate:  
Unconjugated

Full name:  
glia maturation factor, gamma

Gene ID:  
9535

## Applications

Tested Applications:  
Cytometric bead array

Range:  
0.781-100 ng/mL (Cytometric Bead Array)

Recommended Dilutions:  
It is recommended that this reagent should be titrated in each testing system to obtain optimal results.

## Product Information

MP51410-1 targets GMFG in immunoassays as a matched antibody pair. Validated in Cytometric bead array.

Capture antibody: GMFG Monoclonal antibody, PBS Only (Capture) 60941-2-PBS (2G8B4). 100 µg. Concentration 1 mg/mL.

Detection antibody: GMFG Monoclonal antibody, PBS Only (Detector) 60941-3-PBS (1D12C8). 100 µg. Concentration 1 mg/mL.

Unconjugated mouse monoclonal antibody pair in PBS only storage buffer at a concentration of 1 mg/mL, ready for conjugation.

Matched antibody pairs are designed for use in a variety of assays and platforms that require matched antibody pairs.

Antibody use should be optimized for each application and assay.

## Storage

Storage:  
Store at -80°C.  
Storage buffer:  
PBS only

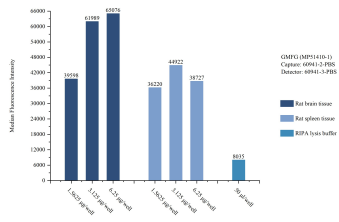
For technical support and original validation data for this product please contact:

T: 1 (888) 4PTGLAB (1-888-478-4522) (toll free in USA), or 1(312) 455-8498 (outside USA)

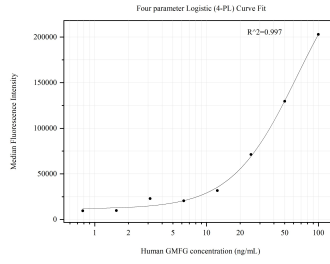
E: [proteintech@ptglab.com](mailto:proteintech@ptglab.com)  
W: [ptglab.com](http://ptglab.com)

This product is exclusively available under Proteintech Group brand and is not available to purchase from any other manufacturer.

## Selected Validation Data



Sample test of MP51410-1, GMFG Monoclonal Matched Antibody Pair, PBS Only. Capture antibody: 60941-2-PBS. Detection antibody: 60941-3-PBS.



Cytometric bead array standard curve of MP51410-1, GMFG Monoclonal Matched Antibody Pair, PBS Only. Capture antibody: 60941-2-PBS. Detection antibody: 60941-3-PBS. Standard: Ag4538. Range: 0.781-100 ng/mL.