

For Research Use Only

SLC7A6 Monoclonal Matched Antibody Pair, PBS Only



Catalog Number:MP51413-1

Capture Antibody Information

Catalog Number:
60980-1-PBS
Host:
Mouse
Isotype:
IgG1
Purification Method:
Protein G Magarose purification

Clone ID:
1G10F2
Reactivity:
human
Immunogen Catalog Number:
Ag4924

Conjugate:
Unconjugated
Full name:
solute carrier family 7 (cationic amino acid transporter, y+ system), member 6
Gene ID:
9057

Detection Antibody Information

Catalog Number:
60980-2-PBS
Host:
Mouse
Isotype:
IgG1
Purification Method:
Protein G Magarose purification

Clone ID:
3D11F11
Reactivity:
human
GenBank:
BC028216
Immunogen Catalog Number:
Ag4924

Conjugate:
Unconjugated
Full name:
solute carrier family 7 (cationic amino acid transporter, y+ system), member 6
Gene ID:
9057

Applications

Tested Applications:
Cytometric bead array

Range:
0.098-100 ng/mL (Cytometric Bead Array)

Recommended Dilutions:
It is recommended that this reagent should be titrated in each testing system to obtain optimal results.

Product Information

MP51413-1 targets SLC7A6 in immunoassays as a matched antibody pair. Validated in Cytometric bead array.
Capture antibody: SLC7A6 Monoclonal antibody, PBS Only (Capture) 60980-1-PBS (1G10F2). 100 µg. Concentration 1 mg/mL.
Detection antibody: SLC7A6 Monoclonal antibody, PBS Only (Detector) 60980-2-PBS (3D11F11). 100 µg. Concentration 1 mg/mL.
Unconjugated mouse monoclonal antibody pair in PBS only storage buffer at a concentration of 1 mg/mL, ready for conjugation.
Matched antibody pairs are designed for use in a variety of assays and platforms that require matched antibody pairs.
Antibody use should be optimized for each application and assay.

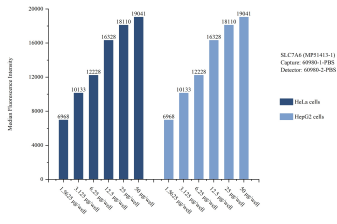
Storage

Storage:
Store at -80°C.
Storage buffer:
PBS only

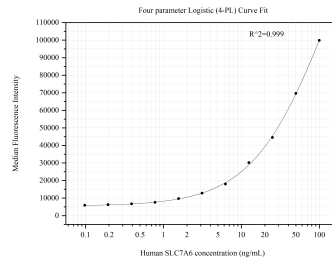
For technical support and original validation data for this product please contact:
T: 1 (888) 4PTGLAB (1-888-478-4522) (toll free in USA), or 1(312) 455-8498 (outside USA) E: proteintech@ptglab.com W: ptglab.com

This product is exclusively available under Proteintech Group brand and is not available to purchase from any other manufacturer.

Selected Validation Data



Sample test of MP51413-1, SLC7A6 Monoclonal Matched Antibody Pair, PBS Only. Capture antibody: 60980-1-PBS. Detection antibody: 60980-2-PBS.



Cytometric bead array standard curve of MP51413-1, SLC7A6 Monoclonal Matched Antibody Pair, PBS Only. Capture antibody: 60980-1-PBS. Detection antibody: 60980-2-PBS. Standard: Ag4924. Range: 0.098-100 ng/mL.