

For Research Use Only

EFCAB2 Monoclonal Matched Antibody Pair, PBS Only



Catalog Number:MP51422-1

Capture Antibody Information

Catalog Number:
60987-1-PBS

Host:
Mouse

Isotype:
IgG1

Purification Method:
Protein G Magarose purification

Clone ID:
1C6A9

Reactivity:
human

Immunogen Catalog Number:
Ag18555

Conjugate:
Unconjugated

Full name:
EF-hand calcium binding domain 2

Gene ID:
84288

Detection Antibody Information

Catalog Number:
60987-2-PBS

Host:
Mouse

Isotype:
IgG1

Purification Method:
Protein G purification

Clone ID:
3C5G5

Reactivity:
human

GenBank:
BC005357

Immunogen Catalog Number:
Ag18555

Conjugate:
Unconjugated

Full name:
EF-hand calcium binding domain 2

Gene ID:
84288

Applications

Tested Applications:
Cytometric bead array

Range:
0.781-100 ng/mL (Cytometric Bead Array)

Recommended Dilutions:
It is recommended that this reagent should be titrated in each testing system to obtain optimal results.

Product Information

MP51422-1 targets EFCAB2 in immunoassays as a matched antibody pair. Validated in Cytometric bead array.

Capture antibody: EFCAB2 Monoclonal antibody, PBS Only (Capture) 60987-1-PBS (1C6A9). 100 µg. Concentration 1 mg/mL.

Detection antibody: EFCAB2 Monoclonal antibody, PBS Only (Detector) 60987-2-PBS (3C5G5). 100 µg. Concentration 1 mg/mL.

Unconjugated mouse monoclonal antibody pair in PBS only storage buffer at a concentration of 1 mg/mL, ready for conjugation.

Matched antibody pairs are designed for use in a variety of assays and platforms that require matched antibody pairs.

Antibody use should be optimized for each application and assay.

Storage

Storage:
Store at -80°C.
Storage buffer:
PBS only

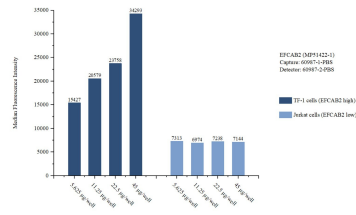
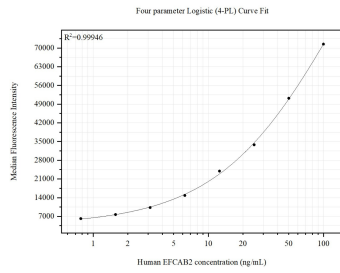
For technical support and original validation data for this product please contact:

T: 1 (888) 4PTGLAB (1-888-478-4522) (toll free in USA), or 1(312) 455-8498 (outside USA)

E: proteintech@ptglab.com
W: ptglab.com

This product is exclusively available under Proteintech Group brand and is not available to purchase from any other manufacturer.

Selected Validation Data



Cytometric bead array standard curve of MP51422-1, EFCAB2 Monoclonal Matched Antibody Pair, PBS Only. Capture antibody: 60987-1-PBS. Detection antibody: 60987-2-PBS. Standard: Ag18555. Range: 0.781-100 ng/mL.

Cytometric bead array sample test of MP51422-1, EFCAB2 Monoclonal Matched Antibody Pair, PBS Only. Capture antibody: 60987-1-PBS. Detection antibody: 60987-2-PBS.