

For Research Use Only

# FBXL4 Monoclonal Matched Antibody Pair, PBS Only



Catalog Number:MP51441-1

## Capture Antibody Information

**Catalog Number:**  
61001-1-PBS  
**Host:**  
Mouse  
**Isotype:**  
IgG1  
**Purification Method:**  
Protein G Magarose purification

**Clone ID:**  
2F3F5  
**Reactivity:**  
human  
**Immunogen Catalog Number:**  
Ag28326

**Conjugate:**  
Unconjugated  
**Full name:**  
F-box and leucine-rich repeat protein 4  
**Gene ID:**  
26235

## Detection Antibody Information

**Catalog Number:**  
61001-2-PBS  
**Host:**  
Mouse  
**Isotype:**  
IgG3  
**Purification Method:**  
Protein A Magarose purification

**Clone ID:**  
1G2D2  
**Reactivity:**  
human  
**GenBank:**  
BC055010  
**Immunogen Catalog Number:**  
Ag28326

**Conjugate:**  
Unconjugated  
**Full name:**  
F-box and leucine-rich repeat protein 4  
**Gene ID:**  
26235

## Applications

**Tested Applications:**  
Cytometric bead array

**Range:**  
0.781-100 ng/mL (Cytometric Bead Array)

**Recommended Dilutions:**  
It is recommended that this reagent should be titrated in each testing system to obtain optimal results.

## Product Information

MP51441-1 targets FBXL4 in immunoassays as a matched antibody pair. Validated in Cytometric bead array.  
Capture antibody: FBXL4 Monoclonal antibody, PBS Only (Capture) 61001-1-PBS (2F3F5). 100 µg. Concentration 1 mg/mL.  
Detection antibody: FBXL4 Monoclonal antibody, PBS Only (Detector) 61001-2-PBS (1G2D2). 100 µg. Concentration 1 mg/mL.  
Unconjugated mouse monoclonal antibody pair in PBS only storage buffer at a concentration of 1 mg/mL, ready for conjugation.  
Matched antibody pairs are designed for use in a variety of assays and platforms that require matched antibody pairs.  
Antibody use should be optimized for each application and assay.

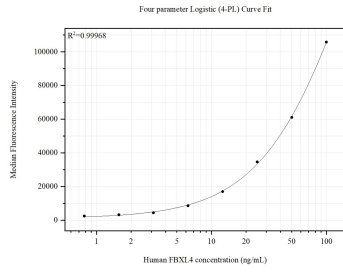
## Storage

**Storage:**  
Store at -80°C.  
**Storage buffer:**  
PBS only

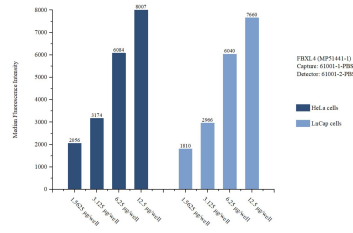
For technical support and original validation data for this product please contact:  
T: 1 (888) 4PTGLAB (1-888-478-4522) (toll free in USA), or 1(312) 455-8498 (outside USA)      E: proteintech@ptglab.com  
W: ptglab.com

This product is exclusively available under Proteintech Group brand and is not available to purchase from any other manufacturer.

## Selected Validation Data



Cytometric bead array standard curve of MP51441-1, FBXL4 Monoclonal Matched Antibody Pair, PBS Only. Capture antibody: 61001-1-PBS. Detection antibody: 61001-2-PBS. Standard: Ag28326. Range: 0.781-100 ng/mL.



Cytometric bead array sample test of MP51441-1, FBXL4 Monoclonal Matched Antibody Pair, PBS Only. Capture antibody: 61001-1-PBS. Detection antibody: 61001-2-PBS.