

For Research Use Only

WBP11 Monoclonal Matched Antibody Pair, PBS Only



Catalog Number:MP51454-1

Capture Antibody Information

Catalog Number:
61005-1-PBS
Host:
Mouse
Isotype:
IgG1
Purification Method:
Protein G Magarose purification

Clone ID:
1H1D1
Reactivity:
human
Immunogen Catalog Number:
Ag0366

Conjugate:
Unconjugated
Full name:
WW domain binding protein 11
Gene ID:
51729

Detection Antibody Information

Catalog Number:
61005-2-PBS
Host:
Mouse
Isotype:
IgG1
Purification Method:
Protein G Magarose purification

Clone ID:
1E3H6
Reactivity:
human
GenBank:
BC001621
Immunogen Catalog Number:
Ag0366

Conjugate:
Unconjugated
Full name:
WW domain binding protein 11
Gene ID:
51729

Applications

Tested Applications:
Cytometric bead array

Range:
0.195-200 ng/mL (Cytometric Bead Array)

Recommended Dilutions:
It is recommended that this reagent should be titrated in each testing system to obtain optimal results.

Product Information

MP51454-1 targets WBP11 in immunoassays as a matched antibody pair. Validated in Cytometric bead array.

Capture antibody: WBP11 Monoclonal antibody, PBS Only (Capture) 61005-1-PBS (1H1D1). 100 µg. Concentration 1 mg/mL.

Detection antibody: WBP11 Monoclonal antibody, PBS Only (Detector) 61005-2-PBS (1E3H6). 100 µg. Concentration 1 mg/mL.

Unconjugated mouse monoclonal antibody pair in PBS only storage buffer at a concentration of 1 mg/mL, ready for conjugation.

Matched antibody pairs are designed for use in a variety of assays and platforms that require matched antibody pairs.

Antibody use should be optimized for each application and assay.

Storage

Storage:
Store at -80°C.
Storage buffer:
PBS only

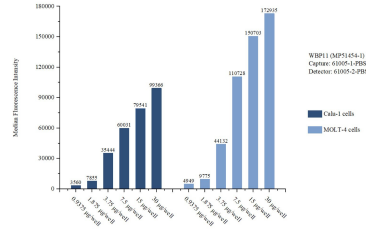
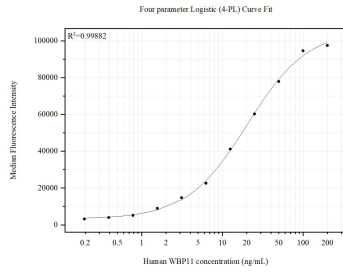
For technical support and original validation data for this product please contact:

T: 1 (888) 4PTGLAB (1-888-478-4522) (toll free in USA), or 1(312) 455-8498 (outside USA)

E: proteintech@ptglab.com
W: ptglab.com

This product is exclusively available under Proteintech Group brand and is not available to purchase from any other manufacturer.

Selected Validation Data



Cytometric bead array standard curve of MP51454-1, WBP11 Monoclonal Matched Antibody Pair, PBS Only. Capture antibody: 61005-1-PBS. Detection antibody: 61005-2-PBS. Standard: Ag0366. Range: 0.195-200 ng/mL.

Cytometric bead array sample test of MP51454-1, WBP11 Monoclonal Matched Antibody Pair, PBS Only. Capture antibody: 61005-1-PBS. Detection antibody: 61005-2-PBS.