

CBLL1 Monoclonal Matched Antibody Pair, PBS Only

Catalog Number: **MP51461-1**

Capture Antibody Information

Catalog Number:
61007-1-PBS
Host:
Mouse
Isotype:
IgG1
Purification Method:
Protein G Magarose purification

Clone ID:
1A10A2
Reactivity:
human
Immunogen Catalog Number:
Ag30913

Conjugate:
Unconjugated
Full name:
Cas-Br-M (murine) ecotropic retroviral transforming sequence-like 1
Gene ID:
79872

Detection Antibody Information

Catalog Number:
61007-2-PBS
Host:
Mouse
Isotype:
IgG1
Purification Method:
Protein G Magarose purification

Clone ID:
2A1F7
Reactivity:
human
GenBank:
BC027460
Immunogen Catalog Number:
Ag30913

Conjugate:
Unconjugated
Full name:
Cas-Br-M (murine) ecotropic retroviral transforming sequence-like 1
Gene ID:
79872

Applications

Tested Applications:
Cytometric bead array

Range:
3.125-400 ng/mL (Cytometric Bead Array)

Recommended Dilutions:
It is recommended that this reagent should be titrated in each testing system to obtain optimal results.

Product Information

MP51461-1 targets CBLL1 in immunoassays as a matched antibody pair. Validated in Cytometric bead array.

Capture antibody: CBLL1 Monoclonal antibody, PBS Only (Capture) 61007-1-PBS (1A10A2). 100 µg. Concentration 1 mg/mL.

Detection antibody: CBLL1 Monoclonal antibody, PBS Only (Detector) 61007-2-PBS (2A1F7). 100 µg. Concentration 1 mg/mL.

Unconjugated mouse monoclonal antibody pair in PBS only storage buffer at a concentration of 1 mg/mL, ready for conjugation.

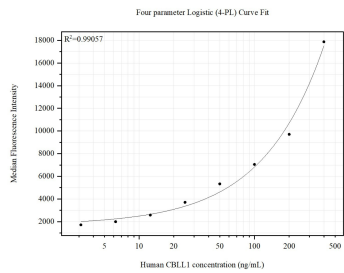
Matched antibody pairs are designed for use in a variety of assays and platforms that require matched antibody pairs.

Antibody use should be optimized for each application and assay.

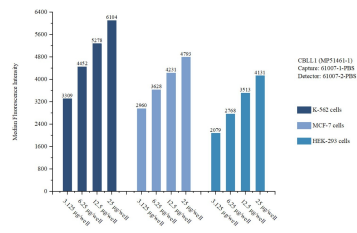
Storage

Storage:
Store at -80°C.
Storage buffer:
PBS only

Selected Validation Data



Cytometric bead array standard curve of MP51461-1, CBLL1 Monoclonal Matched Antibody Pair, PBS Only. Capture antibody: 61007-1-PBS. Detection antibody: 61007-2-PBS. Standard:Ag30913. Range: 3.125-400 ng/mL.



Cytometric bead array sample test of MP51461-1, CBLL1 Monoclonal Matched Antibody Pair, PBS Only. Capture antibody: 61007-1-PBS. Detection antibody: 61007-2-PBS.