

For Research Use Only



# PFKFB3 Monoclonal Matched Antibody Pair, PBS Only

Catalog Number:MP51513-1

## Capture Antibody Information

Catalog Number:  
60241-2-PBS  
Host:  
Mouse  
Isotype:  
IgG1  
Purification Method:  
Protein G Magarose purification

Clone ID:  
3E12A10  
Reactivity:  
human  
Immunogen Catalog Number:  
Ag4737

Conjugate:  
Unconjugated  
Full name:  
6-phosphofructo-2-kinase/fructose-2,6-biphosphatase 3  
Gene ID:  
5209

## Detection Antibody Information

Catalog Number:  
60241-1-PBS  
Host:  
Mouse  
Isotype:  
IgG1  
Purification Method:  
Protein G purification

Clone ID:  
4D1B11  
Reactivity:  
human, mouse  
GenBank:  
BC040482  
Immunogen Catalog Number:  
Ag4737

Conjugate:  
Unconjugated  
Full name:  
6-phosphofructo-2-kinase/fructose-2,6-biphosphatase 3  
Gene ID:  
5209

## Applications

Tested Applications:  
Cytometric bead array

Range:  
3.125-400 ng/mL (Cytometric Bead Array)

Recommended Dilutions:  
It is recommended that this reagent should be titrated in each testing system to obtain optimal results.

## Product Information

MP51513-1 targets PFKFB3 in immunoassays as a matched antibody pair. Validated in Cytometric bead array.

Capture antibody: PFKFB3 Monoclonal antibody, PBS Only (Capture) 60241-2-PBS (3E12A10). 100 µg. Concentration 1 mg/mL.

Detection antibody: PFKFB3 Monoclonal antibody, PBS Only (Detector) 60241-1-PBS (4D1B11). 100 µg. Concentration 1 mg/mL.

Unconjugated mouse monoclonal antibody pair in PBS only storage buffer at a concentration of 1 mg/mL, ready for conjugation.

Matched antibody pairs are designed for use in a variety of assays and platforms that require matched antibody pairs.

Antibody use should be optimized for each application and assay.

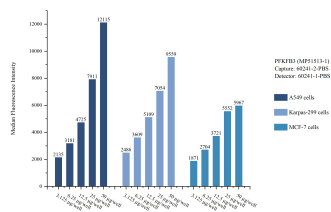
## Storage

Storage:  
Store at -80°C.  
Storage buffer:  
PBS only

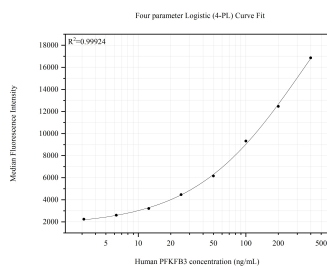
For technical support and original validation data for this product please contact:  
T: 1 (888) 4PTGLAB (1-888-478-4522) (toll free in USA), or 1(312) 455-8498 (outside USA)  
E: [proteintech@ptglab.com](mailto:proteintech@ptglab.com)  
W: [ptglab.com](http://ptglab.com)

This product is exclusively available under Proteintech Group brand and is not available to purchase from any other manufacturer.

## Selected Validation Data



Cytometric bead array sample test of MP51513-1, PFKFB3 Monoclonal Matched Antibody Pair, PBS Only. Capture antibody: 60241-2-PBS. Detection antibody: 60241-1-PBS.



Cytometric bead array standard curve of MP51513-1, PFKFB3 Monoclonal Matched Antibody Pair, PBS Only. Capture antibody: 60241-2-PBS. Detection antibody: 60241-1-PBS. Standard: Ag4737. Range: 3.125-400 ng/mL.