

# NUP50 Monoclonal Matched Antibody Pair, PBS Only

Catalog Number: **MP51516-1**

## Capture Antibody Information

<b>Catalog Number:</b> 67001-1-PBS	<b>Clone ID:</b> 1D5A7	<b>Conjugate:</b> Unconjugated
<b>Host:</b> Mouse	<b>Reactivity:</b> human, mouse	<b>Full name:</b> nucleoporin 50kDa
<b>Isotype:</b> IgG1	<b>Immunogen Catalog Number:</b> Ag15144	<b>Gene ID:</b> 10762
<b>Purification Method:</b> Protein A purification		

## Detection Antibody Information

<b>Catalog Number:</b> 67001-2-PBS	<b>Clone ID:</b> 1F5E12	<b>Conjugate:</b> Unconjugated
<b>Host:</b> Mouse	<b>Reactivity:</b> human	<b>Full name:</b> nucleoporin 50kDa
<b>Isotype:</b> IgG1	<b>GenBank:</b> BC028125	<b>Gene ID:</b> 10762
<b>Purification Method:</b> Protein G Magarose purification	<b>Immunogen Catalog Number:</b> Ag15144	

## Applications

<b>Tested Applications:</b> Cytometric bead array	<b>Range:</b> 1.563-200 ng/mL (Cytometric Bead Array)	<b>Recommended Dilutions:</b> It is recommended that this reagent should be titrated in each testing system to obtain optimal results.
--	--	---

## Product Information

MP51516-1 targets NUP50 in immunoassays as a matched antibody pair. Validated in Cytometric bead array.

Capture antibody: NUP50 Monoclonal antibody, PBS Only (Capture) 67001-1-PBS (1D5A7). 100 µg. Concentration 1 mg/mL.

Detection antibody: NUP50 Monoclonal antibody, PBS Only (Detector) 67001-2-PBS (1F5E12). 100 µg. Concentration 1 mg/mL.

Unconjugated mouse monoclonal antibody pair in PBS only storage buffer at a concentration of 1 mg/mL, ready for conjugation.

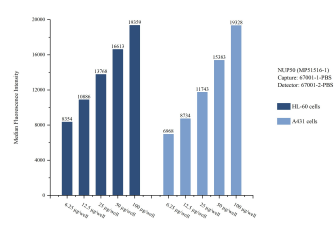
Matched antibody pairs are designed for use in a variety of assays and platforms that require matched antibody pairs.

Antibody use should be optimized for each application and assay.

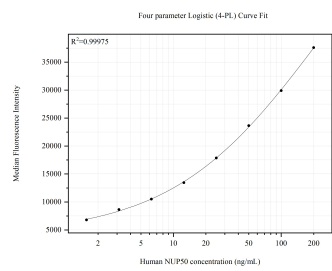
## Storage

**Storage:**  
Store at -80°C.  
**Storage buffer:**  
PBS only

Selected Validation Data



Cytometric bead array sample test of MP51516-1, NUP50 Monoclonal Matched Antibody Pair, PBS Only. Capture antibody: 67001-1-PBS. Detection antibody: 67001-2-PBS.



Cytometric bead array standard curve of MP51516-1, NUP50 Monoclonal Matched Antibody Pair, PBS Only. Capture antibody: 67001-1-PBS. Detection antibody: 67001-2-PBS. Standard: Ag15144. Range: 1.563-200 ng/mL.