

# MED30 Monoclonal Matched Antibody Pair, PBS Only

Catalog Number: **MP51523-1**

## Capture Antibody Information

**Catalog Number:**  
67038-2-PBS  
**Host:**  
Mouse  
**Isotype:**  
IgG1  
**Purification Method:**  
Protein G purification

**Clone ID:**  
3E4A7  
**Reactivity:**  
human  
**Immunogen Catalog Number:**  
Ag10235

**Conjugate:**  
Unconjugated  
**Full name:**  
mediator complex subunit 30  
**Gene ID:**  
90390

## Detection Antibody Information

**Catalog Number:**  
67038-1-PBS  
**Host:**  
Mouse  
**Isotype:**  
IgG2a  
**Purification Method:**  
Protein A purification

**Clone ID:**  
1D7C4  
**Reactivity:**  
human, rat, pig  
**GenBank:**  
BC008226  
**Immunogen Catalog Number:**  
Ag10235

**Conjugate:**  
Unconjugated  
**Full name:**  
mediator complex subunit 30  
**Gene ID:**  
90390

## Applications

**Tested Applications:**  
Cytometric bead array

**Range:**  
0.391-50 ng/mL (Cytometric Bead Array)

**Recommended Dilutions:**  
It is recommended that this reagent should be titrated in each testing system to obtain optimal results.

## Product Information

MP51523-1 targets MED30 in immunoassays as a matched antibody pair. Validated in Cytometric bead array.

Capture antibody: MED30 Monoclonal antibody, PBS Only (Capture) 67038-2-PBS (3E4A7). 100 µg. Concentration 1 mg/mL.

Detection antibody: MED30 Monoclonal antibody, PBS Only (Detector) 67038-1-PBS (1D7C4). 100 µg. Concentration 1 mg/mL.

Unconjugated mouse monoclonal antibody pair in PBS only storage buffer at a concentration of 1 mg/mL, ready for conjugation.

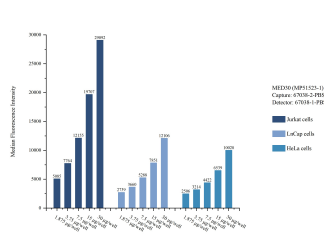
Matched antibody pairs are designed for use in a variety of assays and platforms that require matched antibody pairs.

Antibody use should be optimized for each application and assay.

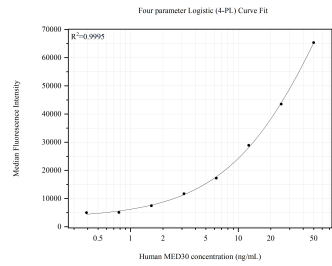
## Storage

**Storage:**  
Store at -80°C.  
**Storage buffer:**  
PBS only

Selected Validation Data



Cytometric bead array sample test of MP51523-1, MED30 Monoclonal Matched Antibody Pair, PBS Only. Capture antibody: 67038-2-PBS. Detection antibody: 67038-1-PBS.



Cytometric bead array standard curve of MP51523-1, MED30 Monoclonal Matched Antibody Pair, PBS Only. Capture antibody: 67038-2-PBS. Detection antibody: 67038-1-PBS. Standard:Ag10235. Range: 0.391-50 ng/mL.