

# MED30 Monoclonal Matched Antibody Pair, PBS Only

Catalog Number: **MP51523-2**

## Capture Antibody Information

**Catalog Number:**

67038-2-PBS

**Host:**

Mouse

**Isotype:**

IgG1

**Purification Method:**

Protein G purification

**Clone ID:**

3E4A7

**Reactivity:**

human

**Immunogen Catalog Number:**

Ag10235

**Conjugate:**

Unconjugated

**Full name:**

mediator complex subunit 30

**Gene ID:**

90390

## Detection Antibody Information

**Catalog Number:**

67038-3-PBS

**Host:**

Mouse

**Isotype:**

IgG2a

**Purification Method:**

Protein A Magarose purification

**Clone ID:**

2C12C6

**Reactivity:**

human

**GenBank:**

BC008226

**Immunogen Catalog Number:**

Ag10235

**Conjugate:**

Unconjugated

**Full name:**

mediator complex subunit 30

**Gene ID:**

90390

## Applications

**Tested Applications:**

Cytometric bead array, Sandwich ELISA

**Range:**

0.391-50 ng/mL (Cytometric Bead Array)  
156-5000 pg/mL (Sandwich ELISA)

**Recommended Dilutions:**

It is recommended that this reagent should be titrated in each testing system to obtain optimal results.

## Product Information

MP51523-2 targets MED30 in immunoassays as a matched antibody pair. Validated in Cytometric bead array, Sandwich ELISA.

Capture antibody: MED30 Monoclonal antibody, PBS Only (Capture) 67038-2-PBS (3E4A7). 100 µg. Concentration 1 mg/mL.

Detection antibody: MED30 Monoclonal antibody, PBS Only (Detector) 67038-3-PBS (2C12C6). 100 µg. Concentration 1 mg/mL.

Unconjugated mouse monoclonal antibody pair in PBS only storage buffer at a concentration of 1 mg/mL, ready for conjugation.

Matched antibody pairs are designed for use in a variety of assays and platforms that require matched antibody pairs.

Antibody use should be optimized for each application and assay.

## Storage

**Storage:**

Store at -80°C.

**Storage buffer:**

PBS only

For technical support and original validation data for this product please contact:

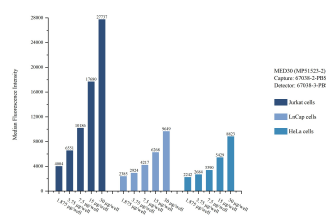
T: 1 (888) 4PTGLAB (1-888-478-4522) (toll free in USA), or 1(312) 455-8498 (outside USA)

E: [proteintech@ptglab.com](mailto:proteintech@ptglab.com)

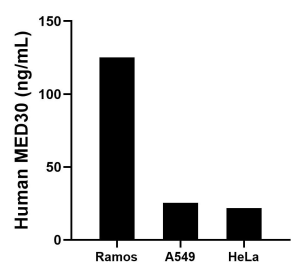
W: [ptglab.com](http://ptglab.com)

**This product is exclusively available under Proteintech Group brand and is not available to purchase from any other manufacturer.**

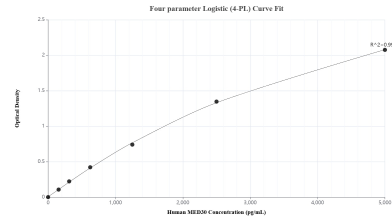
Selected Validation Data



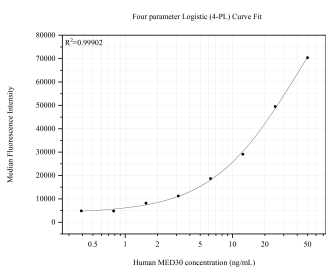
Cytometric bead array sample test of MP51523-2, MED30 Monoclonal Matched Antibody Pair, PBS Only. Capture antibody: 67038-2-PBS. Detection antibody: 67038-3-PBS.



The mean MED30 concentration was determined to be 125.2 ng/mL in Ramos cell extract based on a 2.3 mg/mL extract load, 25.5 ng/mL in A549 cell extract based on a 1.2 mg/mL extract load and 21.9 ng/mL in HeLa cell extract based on a 1.2 mg/mL extract load.



Sandwich ELISA standard curve of MP51523-2, Human MED30 Monoclonal Matched Antibody Pair - PBS only. 67038-2-PBS was coated to a plate as the capture antibody and incubated with serial dilutions of standard Ag10235. 67038-3-PBS was HRP conjugated as the detection antibody. Range: 156-5000 pg/mL.



Cytometric bead array standard curve of MP51523-2, MED30 Monoclonal Matched Antibody Pair, PBS Only. Capture antibody: 67038-2-PBS. Detection antibody: 67038-3-PBS. Standard:Ag10235. Range: 0.391-50 ng/mL