

For Research Use Only

ANXA11 Monoclonal Matched Antibody Pair, PBS Only



Catalog Number:MP51526-1

Capture Antibody Information

Catalog Number:
68089-2-PBS

Host:
Mouse

Isotype:
IgG1

Purification Method:
Protein G Magarose purification

Clone ID:
1C5B4

Reactivity:
human

Immunogen Catalog Number:
Ag31839

Conjugate:
Unconjugated

Full name:
annexin A11

Gene ID:
311

Detection Antibody Information

Catalog Number:
68089-3-PBS

Host:
Mouse

Isotype:
IgG1

Purification Method:
Protein G Magarose purification

Clone ID:
1C2G1

Reactivity:
human

GenBank:
BC007564

Immunogen Catalog Number:
Ag31839

Conjugate:
Unconjugated

Full name:
annexin A11

Gene ID:
311

Applications

Tested Applications:
Cytometric bead array

Range:
3.125-400 ng/mL (Cytometric Bead Array)

Recommended Dilutions:
It is recommended that this reagent should be titrated in each testing system to obtain optimal results.

Product Information

MP51526-1 targets ANXA11 in immunoassays as a matched antibody pair. Validated in Cytometric bead array.

Capture antibody: ANXA11 Monoclonal antibody, PBS Only (Capture) 68089-2-PBS (1C5B4). 100 µg. Concentration 1 mg/mL.

Detection antibody: ANXA11 Monoclonal antibody, PBS Only (Detector) 68089-3-PBS (1C2G1). 100 µg. Concentration 1 mg/mL.

Unconjugated mouse monoclonal antibody pair in PBS only storage buffer at a concentration of 1 mg/mL, ready for conjugation.

Matched antibody pairs are designed for use in a variety of assays and platforms that require matched antibody pairs.

Antibody use should be optimized for each application and assay.

Storage

Storage:
Store at -80°C.
Storage buffer:
PBS only

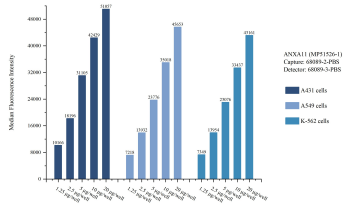
For technical support and original validation data for this product please contact:

T: 1 (888) 4PTGLAB (1-888-478-4522) (toll free in USA), or 1(312) 455-8498 (outside USA)

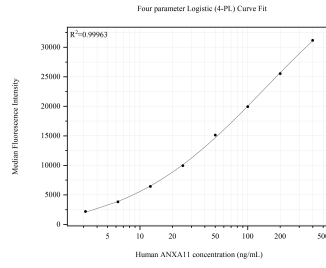
E: proteintech@ptglab.com
W: ptglab.com

This product is exclusively available under Proteintech Group brand and is not available to purchase from any other manufacturer.

Selected Validation Data



Cytometric bead array sample test of MP1526-1, ANXA11 Monoclonal Matched Antibody Pair, PBS Only. Capture antibody: 68089-2-PBS. Detection antibody: 68089-3-PBS.



Cytometric bead array standard curve of MP1526-1, ANXA11 Monoclonal Matched Antibody Pair, PBS Only. Capture antibody: 68089-2-PBS. Detection antibody: 68089-3-PBS. Standard: Ag31839. Range: 3.125-400 ng/mL