

AIFM2 Monoclonal Matched Antibody Pair, PBS Only

Catalog Number: **MP51527-1**

Capture Antibody Information

Catalog Number:
68049-1-PBS
Host:
Mouse
Isotype:
IgG1
Purification Method:
Protein G purification

Clone ID:
1A2B2
Reactivity:
human, mouse
Immunogen Catalog Number:
Ag30516

Conjugate:
Unconjugated
Full name:
apoptosis-inducing factor, mitochondrion-associated, 2
Gene ID:
84883

Detection Antibody Information

Catalog Number:
68049-2-PBS
Host:
Mouse
Isotype:
IgG2a
Purification Method:
Protein A Magarose purification

Clone ID:
4F12D4
Reactivity:
human
GenBank:
BC023601
Immunogen Catalog Number:
Ag30516

Conjugate:
Unconjugated
Full name:
apoptosis-inducing factor, mitochondrion-associated, 2
Gene ID:
84883

Applications

Tested Applications:
Cytometric bead array

Range:
1.563-200 ng/mL (Cytometric Bead Array)

Recommended Dilutions:
It is recommended that this reagent should be titrated in each testing system to obtain optimal results.

Product Information

MP51527-1 targets AIFM2 in immunoassays as a matched antibody pair. Validated in Cytometric bead array.

Capture antibody: AIFM2/ FSP1 Monoclonal antibody, PBS Only (Capture) 68049-1-PBS (1A2B2). 100 µg. Concentration 1 mg/mL.

Detection antibody: AIFM2/ FSP1 Monoclonal antibody, PBS Only (Detector) 68049-2-PBS (4F12D4). 100 µg. Concentration 1 mg/mL.

Unconjugated mouse monoclonal antibody pair in PBS only storage buffer at a concentration of 1 mg/mL, ready for conjugation.

Matched antibody pairs are designed for use in a variety of assays and platforms that require matched antibody pairs.

Antibody use should be optimized for each application and assay.

Storage

Storage:
Store at -80°C.
Storage buffer:
PBS only

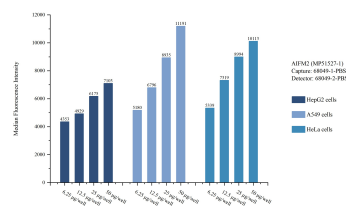
For technical support and original validation data for this product please contact:

T: 1 (888) 4PTGLAB (1-888-478-4522) (toll free in USA), or 1(312) 455-8498 (outside USA)

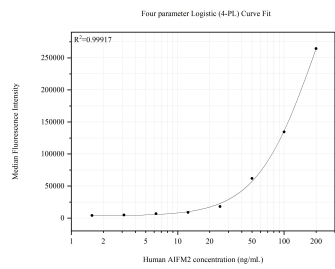
E: proteintech@ptglab.com
W: ptglab.com

This product is exclusively available under Proteintech Group brand and is not available to purchase from any other manufacturer.

Selected Validation Data



Cytometric bead array sample test of MP51527-1, AIFM2 Monoclonal Matched Antibody Pair, PBS Only. Capture antibody: 68049-1-PBS. Detection antibody: 68049-2-PBS.



Cytometric bead array standard curve of MP51527-1, AIFM2 Monoclonal Matched Antibody Pair, PBS Only. Capture antibody: 68049-1-PBS. Detection antibody: 68049-2-PBS. Standard:Ag30516. Range: 1.563-200 ng/mL