

For Research Use Only

GCLM Monoclonal Matched Antibody Pair, PBS Only



Catalog Number:MP51539-1

Capture Antibody Information

Catalog Number:

66808-2-PBS

Host:

Mouse

Isotype:

IgG1

Purification Method:

Protein G purification

Clone ID:

1D5C7

Reactivity:

human

Immunogen Catalog Number:

Ag5497

Conjugate:

Unconjugated

Full name:

glutamate-cysteine ligase, modifier subunit

Gene ID:

2730

Detection Antibody Information

Catalog Number:

66808-3-PBS

Host:

Mouse

Isotype:

IgG1

Purification Method:

Protein G Magarose purification

Clone ID:

1D11B1

Reactivity:

human

GenBank:

BC041809

Immunogen Catalog Number:

Ag5497

Conjugate:

Unconjugated

Full name:

glutamate-cysteine ligase, modifier subunit

Gene ID:

2730

Applications

Tested Applications:

Cytometric bead array

Range:

3.125-400 ng/mL (Cytometric Bead Array)

Recommended Dilutions:

It is recommended that this reagent should be titrated in each testing system to obtain optimal results.

Product Information

MP51539-1 targets GCLM in immunoassays as a matched antibody pair. Validated in Cytometric bead array.

Capture antibody: GCLM Monoclonal antibody, PBS Only (Capture) 66808-2-PBS (1D5C7). 100 µg. Concentration 1 mg/mL.

Detection antibody: GCLM Monoclonal antibody, PBS Only (Detector) 66808-3-PBS (1D11B1). 100 µg. Concentration 1 mg/mL.

Unconjugated mouse monoclonal antibody pair in PBS only storage buffer at a concentration of 1 mg/mL, ready for conjugation.

Matched antibody pairs are designed for use in a variety of assays and platforms that require matched antibody pairs.

Antibody use should be optimized for each application and assay.

Storage

Storage:

Store at -80°C.

Storage buffer:

PBS only

For technical support and original validation data for this product please contact:

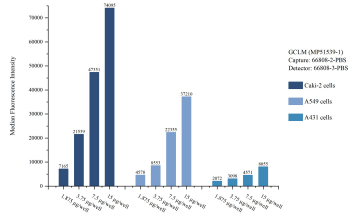
T: 1 (888) 4PTGLAB (1-888-478-4522) (toll free in USA), or 1(312) 455-8498 (outside USA)

E: proteintech@ptglab.com

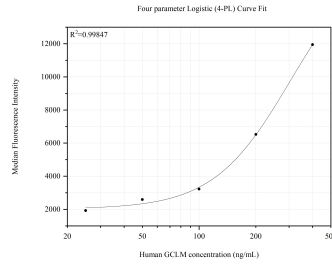
W: ptglab.com

This product is exclusively available under Proteintech Group brand and is not available to purchase from any other manufacturer.

Selected Validation Data



Cytometric bead array sample test of MP51539-1, GCLM Monoclonal Matched Antibody Pair, PBS Only. Capture antibody: 66808-2-PBS. Detection antibody: 66808-3-PBS.



Cytometric bead array standard curve of MP51539-1, GCLM Monoclonal Matched Antibody Pair, PBS Only. Capture antibody: 66808-2-PBS. Detection antibody: 66808-3-PBS. Standard: Ag5497. Range: 3.125-400 ng/mL