

For Research Use Only

SERPINB4 Monoclonal Matched Antibody Pair, PBS Only



Catalog Number:MP51557-1

Capture Antibody Information

Catalog Number:

61039-1-PBS

Host:

Mouse

Isotype:

IgG1

Purification Method:

Protein G Magarose purification

Clone ID:

4C11C9

Reactivity:

human

Immunogen Catalog Number:

Ag1964

Conjugate:

Unconjugated

Full name:

serpin peptidase inhibitor, clade B (ovalbumin), member 4

Gene ID:

6318

Detection Antibody Information

Catalog Number:

61039-2-PBS

Host:

Mouse

Isotype:

IgG1

Purification Method:

Protein G Magarose purification

Clone ID:

5A2C11

Reactivity:

human

GenBank:

BC017401

Immunogen Catalog Number:

Ag1964

Conjugate:

Unconjugated

Full name:

serpin peptidase inhibitor, clade B (ovalbumin), member 4

Gene ID:

6318

Applications

Tested Applications:

Cytometric bead array

Range:

0.781-100 ng/mL (Cytometric Bead Array)

Recommended Dilutions:

It is recommended that this reagent should be titrated in each testing system to obtain optimal results.

Product Information

MP51557-1 targets SERPINB4 in immunoassays as a matched antibody pair. Validated in Cytometric bead array.

Capture antibody: SERPINB4 Monoclonal antibody, PBS Only (Capture) 61039-1-PBS (4C11C9). 100 µg. Concentration 1 mg/mL.

Detection antibody: SERPINB4 Monoclonal antibody, PBS Only (Detector) 61039-2-PBS (5A2C11). 100 µg. Concentration 1 mg/mL.

Unconjugated mouse monoclonal antibody pair in PBS only storage buffer at a concentration of 1 mg/mL, ready for conjugation.

Matched antibody pairs are designed for use in a variety of assays and platforms that require matched antibody pairs.

Antibody use should be optimized for each application and assay.

Storage

Storage:

Store at -80°C.

Storage buffer:

PBS only

For technical support and original validation data for this product please contact:

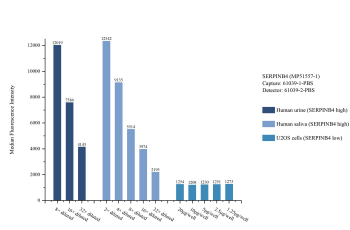
T: 1 (888) 4PTGLAB (1-888-478-4522) (toll free in USA), or 1(312) 455-8498 (outside USA)

E: proteintech@ptglab.com

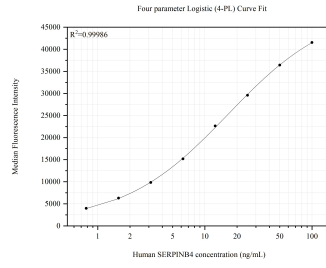
W: ptglab.com

This product is exclusively available under Proteintech Group brand and is not available to purchase from any other manufacturer.

Selected Validation Data



Cytometric bead array sample test of MP51557-1, SERPINB4 Monoclonal Matched Antibody Pair, PBS Only. Capture antibody: 61039-1-PBS. Detection antibody: 61039-2-PBS.



Cytometric bead array standard curve of MP51557-1, SERPINB4 Monoclonal Matched Antibody Pair, PBS Only. Capture antibody: 61039-1-PBS. Detection antibody: 61039-2-PBS. Standard: Ag1964. Range: 0.781-100 ng/mL.