

For Research Use Only

CCR9 Monoclonal Matched Antibody Pair, PBS Only



Catalog Number:MP51559-1

Capture Antibody Information

Catalog Number:
61042-1-PBS

Host:
Mouse

Isotype:
IgG1

Purification Method:
Protein G purification

Clone ID:
1E5H1

Reactivity:
human

Immunogen Catalog Number:
Ag30128

Conjugate:
Unconjugated

Full name:
chemokine (C-C motif) receptor 9

Gene ID:
10803

Detection Antibody Information

Catalog Number:
61042-2-PBS

Host:
Mouse

Isotype:
IgG1

Purification Method:
Protein G Magarose purification

Clone ID:
1B4G1

Reactivity:
human

GenBank:
BC069678

Immunogen Catalog Number:
Ag30128

Conjugate:
Unconjugated

Full name:
chemokine (C-C motif) receptor 9

Gene ID:
10803

Applications

Tested Applications:
Cytometric bead array

Range:
1.563-200 ng/mL (Cytometric Bead Array)

Recommended Dilutions:
It is recommended that this reagent should be titrated in each testing system to obtain optimal results.

Product Information

MP51559-1 targets CCR9 in immunoassays as a matched antibody pair. Validated in Cytometric bead array.

Capture antibody: CCR9 Monoclonal antibody, PBS Only (Capture) 61042-1-PBS (1E5H1). 100 µg. Concentration 1 mg/mL.

Detection antibody: CCR9 Monoclonal antibody, PBS Only (Detector) 61042-2-PBS (1B4G1). 100 µg. Concentration 1 mg/mL.

Unconjugated mouse monoclonal antibody pair in PBS only storage buffer at a concentration of 1 mg/mL, ready for conjugation.

Matched antibody pairs are designed for use in a variety of assays and platforms that require matched antibody pairs.

Antibody use should be optimized for each application and assay.

Storage

Storage:
Store at -80°C.
Storage buffer:
PBS only

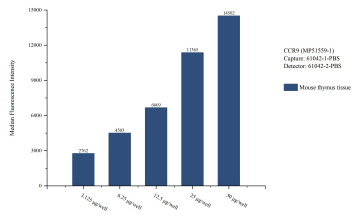
For technical support and original validation data for this product please contact:

T: 1 (888) 4PTGLAB (1-888-478-4522) (toll free in USA), or 1(312) 455-8498 (outside USA)

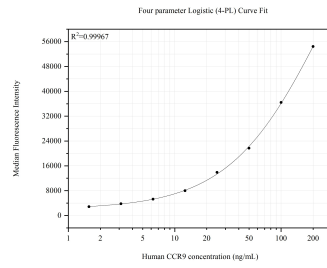
E: proteintech@ptglab.com
W: ptglab.com

This product is exclusively available under Proteintech Group brand and is not available to purchase from any other manufacturer.

Selected Validation Data



Cytometric bead array sample test of MP5155-1, CCR9 Monoclonal Matched Antibody Pair, PBS Only. Capture antibody: 61042-1-PBS. Detection antibody: 61042-2-PBS.



Cytometric bead array standard curve of MP5155-1, CCR9 Monoclonal Matched Antibody Pair, PBS Only. Capture antibody: 61042-1-PBS. Detection antibody: 61042-2-PBS. Standard: Ag30128. Range: 1.563-200 ng/mL