

For Research Use Only

# C6orf106 Monoclonal Matched Antibody Pair, PBS Only



Catalog Number:MP51560-1

## Capture Antibody Information

Catalog Number:  
61043-1-PBS

Host:  
Mouse

Isotype:  
IgG1

Purification Method:  
Protein G purification

Clone ID:  
2G7A4

Reactivity:  
human

Immunogen Catalog Number:  
Ag30012

Conjugate:  
Unconjugated

Full name:  
chromosome 6 open reading frame  
106

Gene ID:  
64771

## Detection Antibody Information

Catalog Number:  
61043-2-PBS

Host:  
Mouse

Isotype:  
IgG1

Purification Method:  
Protein G Magarose purification

Clone ID:  
2E5D1

Reactivity:  
human

GenBank:  
BC002328

Immunogen Catalog Number:  
Ag30012

Conjugate:  
Unconjugated

Full name:  
chromosome 6 open reading frame  
106

Gene ID:  
64771

## Applications

Tested Applications:  
Cytometric bead array

Range:  
0.781-100 ng/mL (Cytometric Bead Array)

Recommended Dilutions:  
It is recommended that this reagent should be titrated in each testing system to obtain optimal results.

## Product Information

MP51560-1 targets C6orf106 in immunoassays as a matched antibody pair. Validated in Cytometric bead array.

Capture antibody: C6orf106 Monoclonal antibody, PBS Only (Capture) 61043-1-PBS (2G7A4). 100 µg. Concentration 1 mg/mL.

Detection antibody: C6orf106 Monoclonal antibody, PBS Only (Detector) 61043-2-PBS (2E5D1). 100 µg. Concentration 1 mg/mL.

Unconjugated mouse monoclonal antibody pair in PBS only storage buffer at a concentration of 1 mg/mL, ready for conjugation.

Matched antibody pairs are designed for use in a variety of assays and platforms that require matched antibody pairs.

Antibody use should be optimized for each application and assay.

## Storage

Storage:  
Store at -80°C.  
Storage buffer:  
PBS only

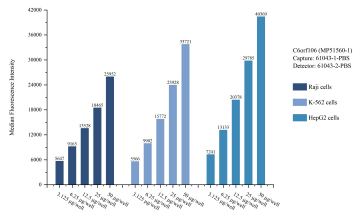
For technical support and original validation data for this product please contact:

T: 1 (888) 4PTGLAB (1-888-478-4522) (toll free in USA), or 1(312) 455-8498 (outside USA)

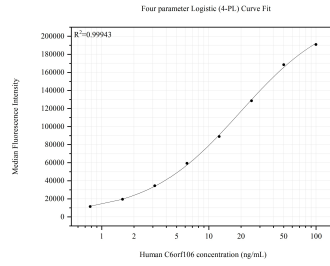
E: [proteintech@ptglab.com](mailto:proteintech@ptglab.com)  
W: [ptglab.com](http://ptglab.com)

This product is exclusively available under Proteintech Group brand and is not available to purchase from any other manufacturer.

## Selected Validation Data



Cytometric bead array sample test of MP51560-1, C6orf106 Monoclonal Matched Antibody Pair, PBS Only. Capture antibody: 61043-1-PBS. Detection antibody: 61043-2-PBS.



Cytometric bead array standard curve of MP51560-1, C6orf106 Monoclonal Matched Antibody Pair, PBS Only. Capture antibody: 61043-1-PBS. Detection antibody: 61043-2-PBS. Standard: Ag30012. Range: 0.781-100 ng/mL.