

# KCNA2 Monoclonal Matched Antibody Pair, PBS Only

Catalog Number:MP51562-1

## Capture Antibody Information

**Catalog Number:**

61044-1-PBS

**Host:**

Mouse

**Isotype:**

IgG1

**Purification Method:**

Protein G purification

**Clone ID:**

3F11C11

**Reactivity:**

human

**Immunogen Catalog Number:**

Ag5639

**Conjugate:**

Unconjugated

**Full name:**

potassium voltage-gated channel, shaker-related subfamily, member 2

**Gene ID:**

3737

## Detection Antibody Information

**Catalog Number:**

61044-2-PBS

**Host:**

Mouse

**Isotype:**

IgG1

**Purification Method:**

Protein G purification

**Clone ID:**

1D2B6

**Reactivity:**

human

**GenBank:**

BC043564

**Immunogen Catalog Number:**

Ag5639

**Conjugate:**

Unconjugated

**Full name:**

potassium voltage-gated channel, shaker-related subfamily, member 2

**Gene ID:**

3737

## Applications

**Tested Applications:**

Cytometric bead array

**Range:**

0.313-10 ng/mL (Cytometric Bead Array)

**Recommended Dilutions:**

It is recommended that this reagent should be titrated in each testing system to obtain optimal results.

## Product Information

MP51562-1 targets KCNA2 in immunoassays as a matched antibody pair. Validated in Cytometric bead array.

Capture antibody: KCNA2 Monoclonal antibody, PBS Only (Capture) 61044-1-PBS (3F11C11). 100 µg. Concentration 1 mg/mL.

Detection antibody: KCNA2 Monoclonal antibody, PBS Only (Detector) 61044-2-PBS (1D2B6). 100 µg. Concentration 1 mg/mL.

Unconjugated mouse monoclonal antibody pair in PBS only storage buffer at a concentration of 1 mg/mL, ready for conjugation.

Matched antibody pairs are designed for use in a variety of assays and platforms that require matched antibody pairs.

Antibody use should be optimized for each application and assay.

## Storage

**Storage:**

Store at -80°C.

**Storage buffer:**

PBS only

For technical support and original validation data for this product please contact:

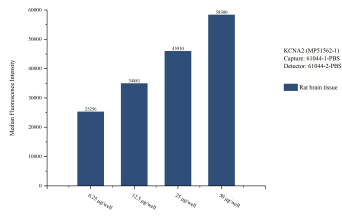
T: 1 (888) 4PTGLAB (1-888-478-4522) (toll free in USA), or 1(312) 455-8498 (outside USA)

E: [proteintech@ptglab.com](mailto:proteintech@ptglab.com)

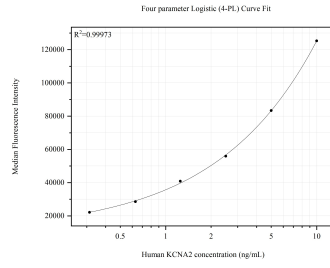
W: [ptglab.com](http://ptglab.com)

**This product is exclusively available under Proteintech Group brand and is not available to purchase from any other manufacturer.**

## Selected Validation Data



Cytometric bead array sample test of MP51562-1, KCNA2 Monoclonal Matched Antibody Pair, PBS Only. Capture antibody: 61044-1-PBS. Detection antibody: 61044-2-PBS.



Cytometric bead array standard curve of MP51562-1, KCNA2 Monoclonal Matched Antibody Pair, PBS Only. Capture antibody: 61044-1-PBS. Detection antibody: 61044-2-PBS. Standard: Ag5639. Range: 0.313-10 ng/mL.