

SRF Monoclonal Matched Antibody Pair, PBS Only

Catalog Number: **MP51563-1**

Capture Antibody Information

Catalog Number:
66742-1-PBS
Host:
Mouse
Isotype:
IgG2a
Purification Method:
Protein A purification

Clone ID:
1G8F4
Reactivity:
human, mouse, rat
Immunogen Catalog Number:
Ag10386

Conjugate:
Unconjugated
Full name:
serum response factor (c-fos serum response element-binding transcription factor)
Gene ID:
6722

Detection Antibody Information

Catalog Number:
66742-2-PBS
Host:
Mouse
Isotype:
IgG1
Purification Method:
Protein G Magarose purification

Clone ID:
5A10C11
Reactivity:
human
GenBank:
BC048211
Immunogen Catalog Number:
Ag10386

Conjugate:
Unconjugated
Full name:
serum response factor (c-fos serum response element-binding transcription factor)
Gene ID:
6722

Applications

Tested Applications:
Cytometric bead array

Range:
0.391-50 ng/mL (Cytometric Bead Array)

Recommended Dilutions:
It is recommended that this reagent should be titrated in each testing system to obtain optimal results.

Product Information

MP51563-1 targets SRF in immunoassays as a matched antibody pair. Validated in Cytometric bead array.

Capture antibody: SRF Monoclonal antibody, PBS Only (Capture) 66742-1-PBS (1G8F4). 100 µg. Concentration 1 mg/mL.

Detection antibody: SRF Monoclonal antibody, PBS Only (Detector) 66742-2-PBS (5A10C11). 100 µg. Concentration 1 mg/mL.

Unconjugated mouse monoclonal antibody pair in PBS only storage buffer at a concentration of 1 mg/mL, ready for conjugation.

Matched antibody pairs are designed for use in a variety of assays and platforms that require matched antibody pairs.

Antibody use should be optimized for each application and assay.

Storage

Storage:
Store at -80°C.
Storage buffer:
PBS only

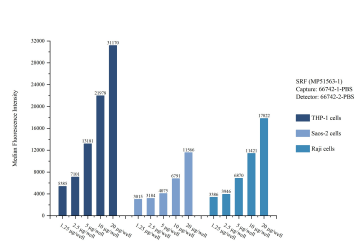
For technical support and original validation data for this product please contact:

T: 1 (888) 4PTGLAB (1-888-478-4522) (toll free in USA), or 1(312) 455-8498 (outside USA)

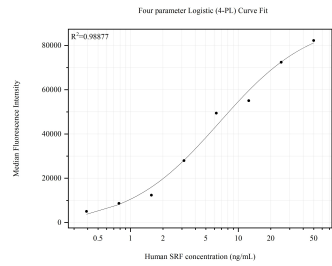
E: proteintech@ptglab.com
W: ptglab.com

This product is exclusively available under Proteintech Group brand and is not available to purchase from any other manufacturer.

Selected Validation Data



Cytometric bead array sample test of MP51563-1, SRF Monoclonal Matched Antibody Pair, PBS Only. Capture antibody: 66742-1-PBS. Detection antibody: 66742-2-PBS.



Cytometric bead array standard curve of MP51563-1, SRF Monoclonal Matched Antibody Pair, PBS Only. Capture antibody: 66742-1-PBS. Detection antibody: 66742-2-PBS. Standard:Ag10386. Range: 0.391-50 ng/mL.