

HSP90AB1 Monoclonal Matched Antibody Pair, PBS Only

Catalog Number: **MP51569-1**

Capture Antibody Information

Catalog Number:
67450-2-PBS
Host:
Mouse
Isotype:
IgG1
Purification Method:
Protein G purification

Clone ID:
2H6D6
Reactivity:
human
Immunogen Catalog Number:
Ag28379

Conjugate:
Unconjugated
Full name:
heat shock protein 90kDa alpha (cytosolic), class B member 1
Gene ID:
3326

Detection Antibody Information

Catalog Number:
67450-1-PBS
Host:
Mouse
Isotype:
IgG2b
Purification Method:
Protein A purification

Clone ID:
2D3D1
Reactivity:
human, mouse, rat
GenBank:
BC014485
Immunogen Catalog Number:
Ag28379

Conjugate:
Unconjugated
Full name:
heat shock protein 90kDa alpha (cytosolic), class B member 1
Gene ID:
3326

Applications

Tested Applications:
Cytometric bead array

Range:
1.563-200 ng/mL (Cytometric Bead Array)

Recommended Dilutions:
It is recommended that this reagent should be titrated in each testing system to obtain optimal results.

Product Information

MP51569-1 targets HSP90AB1 in immunoassays as a matched antibody pair. Validated in Cytometric bead array.

Capture antibody: HSP90AB1 Monoclonal antibody, PBS Only (Capture) 67450-2-PBS (2H6D6). 100 µg. Concentration 1 mg/mL.

Detection antibody: HSP90 Monoclonal antibody, PBS Only (Detector) 67450-1-PBS (2D3D1). 100 µg. Concentration 1 mg/mL.

Unconjugated mouse monoclonal antibody pair in PBS only storage buffer at a concentration of 1 mg/mL, ready for conjugation.

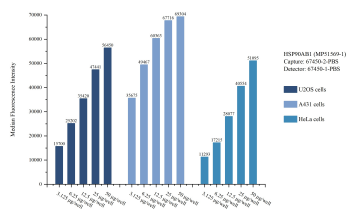
Matched antibody pairs are designed for use in a variety of assays and platforms that require matched antibody pairs.

Antibody use should be optimized for each application and assay.

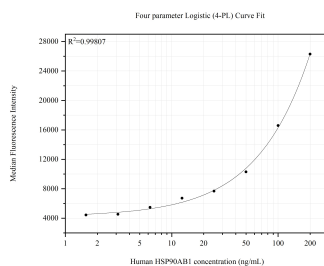
Storage

Storage:
Store at -80°C.
Storage buffer:
PBS only

Selected Validation Data



Cytometric bead array sample test of MP51569-1, HSP90AB1 Monoclonal Matched Antibody Pair, PBS Only. Capture antibody: 67450-2-PBS. Detection antibody: 67450-1-PBS.



Cytometric bead array standard curve of MP51569-1, HSP90AB1 Monoclonal Matched Antibody Pair, PBS Only. Capture antibody: 67450-2-PBS. Detection antibody: 67450-1-PBS. Standard:Ag28379. Range: 1.563-200 ng/mL