

For Research Use Only

MCM5 Monoclonal Matched Antibody Pair, PBS Only



Catalog Number:MP51608-1

Capture Antibody Information

Catalog Number:
67049-1-PBS
Host:
Mouse
Isotype:
IgG1
Purification Method:
Protein G purification

Clone ID:
3B7F8
Reactivity:
human, mouse, rat
Immunogen Catalog Number:
Ag28704

Conjugate:
Unconjugated
Full name:
minichromosome maintenance
complex component 5
Gene ID:
4174

Detection Antibody Information

Catalog Number:
67049-2-PBS
Host:
Mouse
Isotype:
IgG2b
Purification Method:
Protein A purification

Clone ID:
1A9A1
Reactivity:
human
GenBank:
BC000142
Immunogen Catalog Number:
Ag28704

Conjugate:
Unconjugated
Full name:
minichromosome maintenance
complex component 5
Gene ID:
4174

Applications

Tested Applications:
Cytometric bead array

Range:
0.781-100 ng/mL (Cytometric Bead Array)

Recommended Dilutions:
It is recommended that this reagent should be titrated in each testing system to obtain optimal results.

Product Information

MP51608-1 targets MCM5 in immunoassays as a matched antibody pair. Validated in Cytometric bead array.

Capture antibody: MCM5 Monoclonal antibody, PBS Only (Capture) 67049-1-PBS (3B7F8). 100 µg. Concentration 1 mg/mL.

Detection antibody: MCM5 Monoclonal antibody, PBS Only (Detector) 67049-2-PBS (1A9A1). 100 µg. Concentration 1 mg/mL.

Unconjugated mouse monoclonal antibody pair in PBS only storage buffer at a concentration of 1 mg/mL, ready for conjugation.

Matched antibody pairs are designed for use in a variety of assays and platforms that require matched antibody pairs.

Antibody use should be optimized for each application and assay.

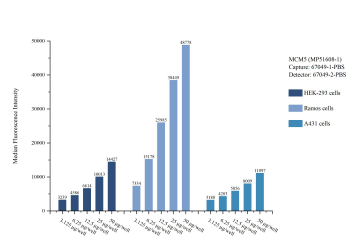
Storage

Storage:
Store at -80°C.
Storage buffer:
PBS only

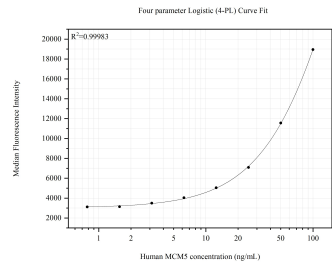
For technical support and original validation data for this product please contact:
T: 1 (888) 4PTGLAB (1-888-478-4522) (toll free in USA), or 1(312) 455-8498 (outside USA)
E: proteintech@ptglab.com
W: ptglab.com

This product is exclusively available under Proteintech Group brand and is not available to purchase from any other manufacturer.

Selected Validation Data



Cytometric bead array sample test of MP51608-1, MCM5 Monoclonal Matched Antibody Pair, PBS Only. Capture antibody: 67049-1-PBS. Detection antibody: 67049-2-PBS.



Cytometric bead array standard curve of MP51608-1, MCM5 Monoclonal Matched Antibody Pair, PBS Only. Capture antibody: 67049-1-PBS. Detection antibody: 67049-2-PBS. Standard:Ag28704. Range: 0.781-100 ng/mL.