

For Research Use Only

MAPK6 Monoclonal Matched Antibody Pair, PBS Only



Catalog Number:MP51628-1

Capture Antibody Information

Catalog Number:

61058-1-PBS

Host:

Mouse

Isotype:

IgG2a

Purification Method:

Protein A purification

Clone ID:

2C8C4

Reactivity:

human

Immunogen Catalog Number:

Ag28703

Conjugate:

Unconjugated

Full name:

mitogen-activated protein kinase 6

Gene ID:

5597

Detection Antibody Information

Catalog Number:

61058-2-PBS

Host:

Mouse

Isotype:

IgG1

Purification Method:

Protein G Magarose purification

Clone ID:

2F10E2

Reactivity:

human

GenBank:

BC035492

Immunogen Catalog Number:

Ag28703

Conjugate:

Unconjugated

Full name:

mitogen-activated protein kinase 6

Gene ID:

5597

Applications

Tested Applications:

Cytometric bead array

Range:

1.563-200 ng/mL (Cytometric Bead Array)

Recommended Dilutions:

It is recommended that this reagent should be titrated in each testing system to obtain optimal results.

Product Information

MP51628-1 targets MAPK6 in immunoassays as a matched antibody pair. Validated in Cytometric bead array.

Capture antibody: MAPK6 Monoclonal antibody, PBS Only (Capture) 61058-1-PBS (2C8C4). 100 µg. Concentration 1 mg/mL.

Detection antibody: MAPK6 Monoclonal antibody, PBS Only (Detector) 61058-2-PBS (2F10E2). 100 µg. Concentration 1 mg/mL.

Unconjugated mouse monoclonal antibody pair in PBS only storage buffer at a concentration of 1 mg/mL, ready for conjugation.

Matched antibody pairs are designed for use in a variety of assays and platforms that require matched antibody pairs.

Antibody use should be optimized for each application and assay.

Storage

Storage:

Store at -80°C.

Storage buffer:

PBS only

For technical support and original validation data for this product please contact:

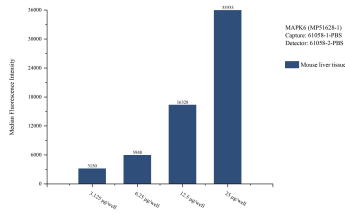
T: 1 (888) 4PTGLAB (1-888-478-4522) (toll free in USA), or 1(312) 455-8498 (outside USA)

E: proteintech@ptglab.com

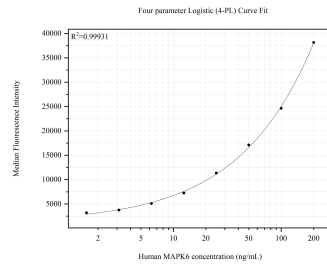
W: ptglab.com

This product is exclusively available under Proteintech Group brand and is not available to purchase from any other manufacturer.

Selected Validation Data



Cytometric bead array sample test of MP51628-1, MAPK6 Monoclonal Matched Antibody Pair, PBS Only. Capture antibody: 61058-1-PBS. Detection antibody: 61058-2-PBS.



Cytometric bead array standard curve of MP51628-1, MAPK6 Monoclonal Matched Antibody Pair, PBS Only. Capture antibody: 61058-1-PBS. Detection antibody: 61058-2-PBS. Standard: Ag28703. Range: 1.563-200 ng/mL.