

For Research Use Only

PTP4A1 Monoclonal Matched Antibody Pair, PBS Only



Catalog Number:MP51678-1

Capture Antibody Information

Catalog Number:
67584-2-PBS
Host:
Mouse
Isotype:
IgG1
Purification Method:
Protein G Magarose purification

Clone ID:
2E12D5
Reactivity:
human
Immunogen Catalog Number:
Ag14436

Conjugate:
Unconjugated
Full name:
protein tyrosine phosphatase type IVA, member 1
Gene ID:
7803

Detection Antibody Information

Catalog Number:
67584-3-PBS
Host:
Mouse
Isotype:
IgG1
Purification Method:
Protein G Magarose purification

Clone ID:
1E8G1
Reactivity:
human
GenBank:
BC023975
Immunogen Catalog Number:
Ag14436

Conjugate:
Unconjugated
Full name:
protein tyrosine phosphatase type IVA, member 1
Gene ID:
7803

Applications

Tested Applications:
Cytometric bead array

Range:
0.781-100 ng/mL (Cytometric Bead Array)

Recommended Dilutions:
It is recommended that this reagent should be titrated in each testing system to obtain optimal results.

Product Information

MP51678-1 targets PTP4A1 in immunoassays as a matched antibody pair. Validated in Cytometric bead array.
Capture antibody: PTP4A1 Monoclonal antibody, PBS Only (Capture) 67584-2-PBS (2E12D5). 100 µg. Concentration 1 mg/mL.
Detection antibody: PTP4A1 Monoclonal antibody, PBS Only (Detector) 67584-3-PBS (1E8G1). 100 µg. Concentration 1 mg/mL.
Unconjugated mouse monoclonal antibody pair in PBS only storage buffer at a concentration of 1 mg/mL, ready for conjugation.
Matched antibody pairs are designed for use in a variety of assays and platforms that require matched antibody pairs.
Antibody use should be optimized for each application and assay.

Storage

Storage:
Store at -80°C.
Storage buffer:
PBS only

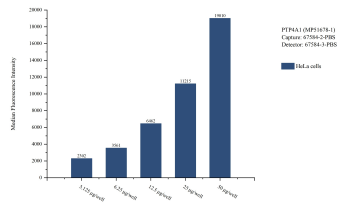
For technical support and original validation data for this product please contact:

T: 1 (888) 4PTGLAB (1-888-478-4522) (toll free in USA), or 1(312) 455-8498 (outside USA)

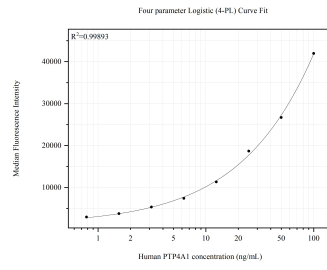
E: proteintech@ptglab.com
W: ptglab.com

This product is exclusively available under Proteintech Group brand and is not available to purchase from any other manufacturer.

Selected Validation Data



Cytometric bead array sample test of MP51678-1, PTP4A1 Monoclonal Matched Antibody Pair, PBS Only. Capture antibody: 67584-2-PBS. Detection antibody: 67584-3-PBS.



Cytometric bead array standard curve of MP51678-1, PTP4A1 Monoclonal Matched Antibody Pair, PBS Only. Capture antibody: 67584-2-PBS. Detection antibody: 67584-3-PBS. Standard: Ag14436. Range: 0.781-100 ng/mL.