

For Research Use Only

EML4 Monoclonal Matched Antibody Pair, PBS Only



Catalog Number:MP51727-1

Capture Antibody Information

Catalog Number:
61094-1-PBS

Host:
Mouse

Isotype:
IgG1

Purification Method:
Protein G purification

Clone ID:
1G11G5

Reactivity:
human

Immunogen Catalog Number:
Ag18755

Conjugate:
Unconjugated

Full name:
echinoderm microtubule associated protein like 4

Gene ID:
27436

Detection Antibody Information

Catalog Number:
61094-2-PBS

Host:
Mouse

Isotype:
IgM

Purification Method:
Thiophilic affinity chromatograph

Clone ID:
2D6H1

Reactivity:
human

GenBank:
BC140845

Immunogen Catalog Number:
Ag18755

Conjugate:
Unconjugated

Full name:
echinoderm microtubule associated protein like 4

Gene ID:
27436

Applications

Tested Applications:
Cytometric bead array

Range:
0.781-100 ng/mL (Cytometric Bead Array)

Recommended Dilutions:
It is recommended that this reagent should be titrated in each testing system to obtain optimal results.

Product Information

MP51727-1 targets EML4 in immunoassays as a matched antibody pair. Validated in Cytometric bead array.

Capture antibody: EML4 Monoclonal antibody, PBS Only (Capture) 61094-1-PBS (1G11G5). 100 µg. Concentration 1 mg/mL.

Detection antibody: EML4 Monoclonal antibody, PBS Only (Detector) 61094-2-PBS (2D6H1). 100 µg. Concentration 1 mg/mL.

Unconjugated mouse monoclonal antibody pair in PBS only storage buffer at a concentration of 1 mg/mL, ready for conjugation.

Matched antibody pairs are designed for use in a variety of assays and platforms that require matched antibody pairs.

Antibody use should be optimized for each application and assay.

Storage

Storage:
Store at -80°C.
Storage buffer:
PBS only

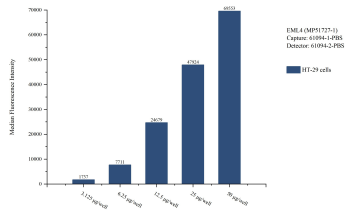
For technical support and original validation data for this product please contact:

T: 1 (888) 4PTGLAB (1-888-478-4522) (toll free in USA), or 1(312) 455-8498 (outside USA)

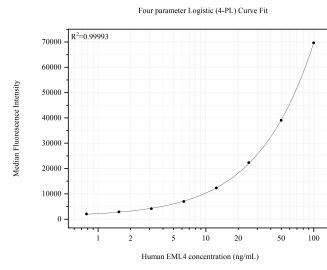
E: proteintech@ptglab.com
W: ptglab.com

This product is exclusively available under Proteintech Group brand and is not available to purchase from any other manufacturer.

Selected Validation Data



Cytometric bead array sample test of MP51727-1, EML4 Monoclonal Matched Antibody Pair, PBS Only. Capture antibody: 61094-1-PBS. Detection antibody: 61094-2-PBS.



Cytometric bead array standard curve of MP51727-1, EML4 Monoclonal Matched Antibody Pair, PBS Only. Capture antibody: 61094-1-PBS. Detection antibody: 61094-2-PBS. Standard: Ag18755. Range: 0.781-100 ng/mL.