

For Research Use Only

# SERBP1 Monoclonal Matched Antibody Pair, PBS Only



Catalog Number:MP51733-1

## Capture Antibody Information

Catalog Number:

67792-1-PBS

Host:

Mouse

Isotype:

IgG1

Purification Method:

Protein G purification

Clone ID:

1D4H1

Reactivity:

human, mouse, rat, pig, canine

Immunogen Catalog Number:

Ag30202

Conjugate:

Unconjugated

Full name:

SERPINE1 mRNA binding protein 1

Gene ID:

26135

## Detection Antibody Information

Catalog Number:

67792-2-PBS

Host:

Mouse

Isotype:

IgG1

Purification Method:

Protein G purification

Clone ID:

1A11B3

Reactivity:

human

GenBank:

BC008045

Immunogen Catalog Number:

Ag30202

Conjugate:

Unconjugated

Full name:

SERPINE1 mRNA binding protein 1

Gene ID:

26135

## Applications

Tested Applications:

Cytometric bead array

Range:

3.125-400 ng/mL (Cytometric Bead Array)

Recommended Dilutions:

It is recommended that this reagent should be titrated in each testing system to obtain optimal results.

## Product Information

MP51733-1 targets SERBP1 in immunoassays as a matched antibody pair. Validated in Cytometric bead array.

Capture antibody: SERBP1 Monoclonal antibody, PBS Only (Capture) 67792-1-PBS (1D4H1). 100 µg. Concentration 1 mg/mL.

Detection antibody: SERBP1 Monoclonal antibody, PBS Only (Detector) 67792-2-PBS (1A11B3). 100 µg. Concentration 1 mg/mL.

Unconjugated mouse monoclonal antibody pair in PBS only storage buffer at a concentration of 1 mg/mL, ready for conjugation.

Matched antibody pairs are designed for use in a variety of assays and platforms that require matched antibody pairs.

Antibody use should be optimized for each application and assay.

## Storage

Storage:

Store at -80°C.

Storage buffer:

PBS only

For technical support and original validation data for this product please contact:

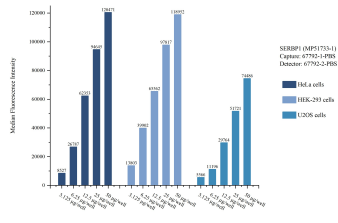
T: 1 (888) 4PTGLAB (1-888-478-4522) (toll free in USA), or 1(312) 455-8498 (outside USA)

E: [proteintech@ptglab.com](mailto:proteintech@ptglab.com)

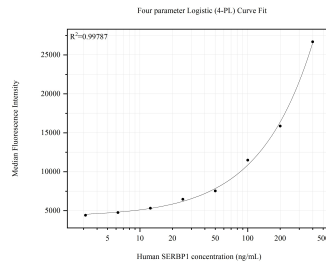
W: [ptglab.com](http://ptglab.com)

This product is exclusively available under Proteintech Group brand and is not available to purchase from any other manufacturer.

## Selected Validation Data



Cytometric bead array sample test of MP51733-1, SERBP1 Monoclonal Matched Antibody Pair, PBS Only. Capture antibody: 67792-1-PBS. Detection antibody: 67792-2-PBS.



Cytometric bead array standard curve of MP51733-1, SERBP1 Monoclonal Matched Antibody Pair, PBS Only. Capture antibody: 67792-1-PBS. Detection antibody: 67792-2-PBS. Standard: Ag30202. Range: 3.125-400 ng/mL