

For Research Use Only

# MAP3K11 Monoclonal Matched Antibody Pair, PBS Only



Catalog Number:MP51737-1

## Capture Antibody Information

**Catalog Number:**  
61102-1-PBS  
**Host:**  
Mouse  
**Isotype:**  
IgG1  
**Purification Method:**  
Protein G Magarose purification

**Clone ID:**  
1D4C8  
**Reactivity:**  
human  
**Immunogen Catalog Number:**  
Ag29748

**Conjugate:**  
Unconjugated  
**Full name:**  
mitogen-activated protein kinase kinase kinase 11  
**Gene ID:**  
4296

## Detection Antibody Information

**Catalog Number:**  
61102-2-PBS  
**Host:**  
Mouse  
**Isotype:**  
IgG1  
**Purification Method:**  
Protein G Magarose purification

**Clone ID:**  
1G1C1  
**Reactivity:**  
human  
**GenBank:**  
BC011263  
**Immunogen Catalog Number:**  
Ag29748

**Conjugate:**  
Unconjugated  
**Full name:**  
mitogen-activated protein kinase kinase kinase 11  
**Gene ID:**  
4296

## Applications

**Tested Applications:**  
Cytometric bead array

**Range:**  
0.156-20 ng/mL (Cytometric Bead Array)

**Recommended Dilutions:**  
It is recommended that this reagent should be titrated in each testing system to obtain optimal results.

## Product Information

MP51737-1 targets MAP3K11 in immunoassays as a matched antibody pair. Validated in Cytometric bead array.

Capture antibody: MAP3K11 Monoclonal antibody, PBS Only (Capture) 61102-1-PBS (1D4C8). 100 µg. Concentration 1 mg/mL.

Detection antibody: MAP3K11 Monoclonal antibody, PBS Only (Detector) 61102-2-PBS (1G1C1). 100 µg. Concentration 1 mg/mL.

Unconjugated mouse monoclonal antibody pair in PBS only storage buffer at a concentration of 1 mg/mL, ready for conjugation.

Matched antibody pairs are designed for use in a variety of assays and platforms that require matched antibody pairs.

Antibody use should be optimized for each application and assay.

## Storage

**Storage:**  
Store at -80°C.  
**Storage buffer:**  
PBS only

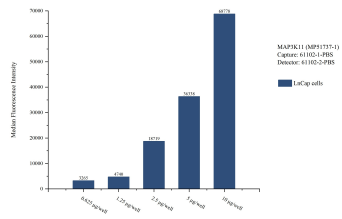
For technical support and original validation data for this product please contact:

T: 1 (888) 4PTGLAB (1-888-478-4522) (toll free in USA), or 1(312) 455-8498 (outside USA)

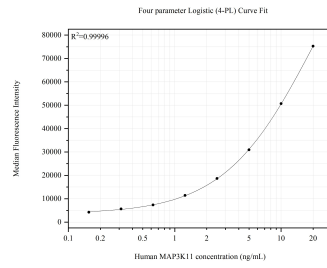
E: [proteintech@ptglab.com](mailto:proteintech@ptglab.com)  
W: [ptglab.com](http://ptglab.com)

**This product is exclusively available under Proteintech Group brand and is not available to purchase from any other manufacturer.**

## Selected Validation Data



Cytometric bead array sample test of MP51737-1, MAP3K11 Monoclonal Matched Antibody Pair, PBS Only. Capture antibody: 61102-1-PBS. Detection antibody: 61102-2-PBS.



Cytometric bead array standard curve of MP51737-1, MAP3K11 Monoclonal Matched Antibody Pair, PBS Only. Capture antibody: 61102-1-PBS. Detection antibody: 61102-2-PBS. Standard: Ag29748. Range: 0.156-20 ng/mL