

For Research Use Only

NSFL1C Monoclonal Matched Antibody Pair, PBS Only



Catalog Number:MP51764-1

Capture Antibody Information

Catalog Number:
68182-1-PBS

Host:
Mouse

Isotype:
IgG1

Purification Method:
Protein G purification

Clone ID:
1F12E12

Reactivity:
human, mouse, rat, pig

Immunogen Catalog Number:
Ag8040

Conjugate:
Unconjugated

Full name:
NSFL1 (p97) cofactor (p47)

Gene ID:
55968

Detection Antibody Information

Catalog Number:
68182-2-PBS

Host:
Mouse

Isotype:
IgG1

Purification Method:
Protein G purification

Clone ID:
1A7B11

Reactivity:
human

GenBank:
BC002801

Immunogen Catalog Number:
Ag8040

Conjugate:
Unconjugated

Full name:
NSFL1 (p97) cofactor (p47)

Gene ID:
55968

Applications

Tested Applications:
Cytometric bead array

Range:
0.781-100 ng/mL (Cytometric Bead Array)

Recommended Dilutions:
It is recommended that this reagent should be titrated in each testing system to obtain optimal results.

Product Information

MP51764-1 targets NSFL1C in immunoassays as a matched antibody pair. Validated in Cytometric bead array.

Capture antibody: NSFL1C Monoclonal antibody, PBS Only (Capture) 68182-1-PBS (1F12E12). 100 µg. Concentration 1 mg/mL.

Detection antibody: NSFL1C Monoclonal antibody, PBS Only (Detector) 68182-2-PBS (1A7B11). 100 µg. Concentration 1 mg/mL.

Unconjugated mouse monoclonal antibody pair in PBS only storage buffer at a concentration of 1 mg/mL, ready for conjugation.

Matched antibody pairs are designed for use in a variety of assays and platforms that require matched antibody pairs.

Antibody use should be optimized for each application and assay.

Storage

Storage:
Store at -80°C.
Storage buffer:
PBS only

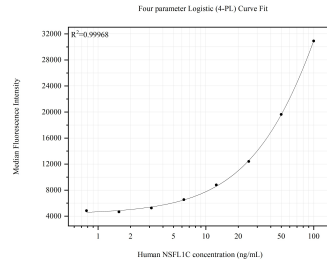
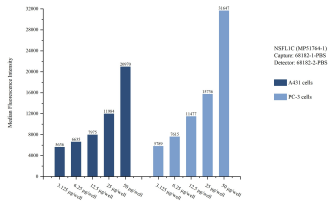
For technical support and original validation data for this product please contact:

T: 1 (888) 4PTGLAB (1-888-478-4522) (toll free in USA), or 1(312) 455-8498 (outside USA)

E: proteintech@ptglab.com
W: ptglab.com

This product is exclusively available under Proteintech Group brand and is not available to purchase from any other manufacturer.

Selected Validation Data



Cytometric bead array sample test of MP51764-1, NSFL1C Monoclonal Matched Antibody Pair, PBS Only. Capture antibody: 68182-1-PBS. Detection antibody: 68182-2-PBS.

Cytometric bead array standard curve of MP51764-1, NSFL1C Monoclonal Matched Antibody Pair, PBS Only. Capture antibody: 68182-1-PBS. Detection antibody: 68182-2-PBS. Standard: Ag8040. Range: 0.781-100 ng/mL