

BACH1 Hybrid Matched Antibody Pair, PBS Only

Catalog Number: **MP80007-1**

Capture Antibody Information

Catalog Number:
66762-2-PBS
Host:
Mouse
Isotype:
IgG1
Purification Method:
Protein G purification

Clone ID:
4E4A5
Reactivity:
human
Immunogen Catalog Number:
Ag6011

Conjugate:
Unconjugated
Full name:
BTB and CNC homology 1, basic leucine zipper transcription factor 1
Gene ID:
571

Detection Antibody Information

Catalog Number:
82842-2-PBS
Host:
Rabbit
Isotype:
IgG
Purification Method:
Protein A purification

Clone ID:
4O2
Reactivity:
human
GenBank:
BC063307
Immunogen Catalog Number:
Ag5128

Conjugate:
Unconjugated
Full name:
BTB and CNC homology 1, basic leucine zipper transcription factor 1
Gene ID:
571

Applications

Tested Applications:
Cytometric bead array, Sandwich ELISA

Range:
0.156-20 ng/mL (Cytometric Bead Array)
31.25-2000 pg/mL (Sandwich ELISA)

Recommended Dilutions:
It is recommended that this reagent should be titrated in each testing system to obtain optimal results.

Product Information

MP80007-1 targets BACH1 in immunoassays as a matched antibody pair. Validated in Cytometric bead array, Sandwich ELISA.

Capture antibody: BACH1 Monoclonal antibody, PBS Only (Capture/Detector) 66762-2-PBS (4E4A5). 100 µg. Concentration 1 mg/mL.

Detection antibody: BACH1 Recombinant antibody, PBS Only (Detector) 82842-2-PBS (4O2). 100 µg. Concentration 1 mg/mL.

Alternative BACH1 matched antibody pairs: MP50384-1, MP50384-2, MP80007-2, MP80007-3

Unconjugated rabbit recombinant antibody and mouse monoclonal antibody pair in PBS only storage buffer at a concentration of 1 mg/mL, ready for conjugation. Created using Proteintech's proprietary in-house recombinant technology. Mouse monoclonal antibody and Rabbit Recombinant production enables unrivalled batch-to-batch consistency, easy scale-up, and future security of supply.

Matched antibody pairs are designed for use in a variety of assays and platforms that require matched antibody pairs.

Antibody use should be optimized for each application and assay.

Storage

Storage:
Store at -80°C.
Storage buffer:
PBS only

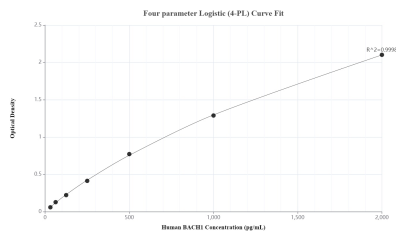
For technical support and original validation data for this product please contact:

T: 1 (888) 4PTGLAB (1-888-478-4522) (toll free in USA), or 1(312) 455-8498 (outside USA)

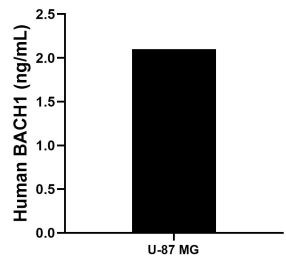
E: proteintech@ptglab.com
W: ptglab.com

This product is exclusively available under Proteintech Group brand and is not available to purchase from any other manufacturer.

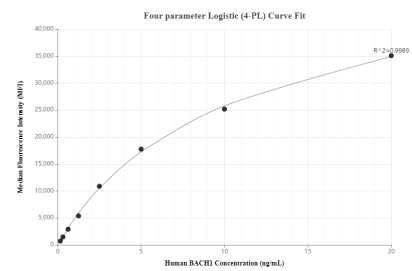
Selected Validation Data



Sandwich ELISA standard curve of MP80007-1, Human BACH1 Hybrid Matched Antibody Pair - PBS only. 66762-2-PBS was coated to a plate as the capture antibody and incubated with serial dilutions of standard Ag6011. 82842-2-PBS was HRP conjugated as the detection antibody. Range: 31.25-2000 pg/mL



The mean BACH1 concentration was determined to be 2.1 ng/mL in U-87 MG cell extract based on a 2.0 mg/mL extract load.



Cytometric bead array standard curve of MP80007-1, BACH1 Hybrid Matched Antibody Pair, PBS Only. Capture antibody: 66762-2-PBS. Detection antibody: 82842-2-PBS. Standard: Ag6011. Range: 0.156-20 ng/mL