

For Research Use Only

SMARCA2 Hybrid Matched Antibody Pair, PBS Only



Catalog Number:MP80010-1

Capture Antibody Information

Catalog Number:
85018-5-PBS
Host:
Rabbit
Isotype:
IgG
Purification Method:
Protein A purification

Clone ID:
242511H4
Reactivity:
human
Immunogen Catalog Number:
Ag25157

Conjugate:
Unconjugated
Full name:
SWI/SNF related, matrix associated, actin dependent regulator of chromatin, subfamily a, member 2
Gene ID:
6595

Detection Antibody Information

Catalog Number:
60774-6-PBS
Host:
Mouse
Isotype:
IgG1
Purification Method:
Protein G Magarose purification

Clone ID:
2C7H5
Reactivity:
human
GenBank:
NM_003070
Immunogen Catalog Number:
Ag33074

Conjugate:
Unconjugated
Full name:
SWI/SNF related, matrix associated, actin dependent regulator of chromatin, subfamily a, member 2
Gene ID:
6595

Applications

Tested Applications:
Sandwich ELISA

Range:
0.313-20 ng/mL (Sandwich ELISA)

Recommended Dilutions:
It is recommended that this reagent should be titrated in each testing system to obtain optimal results.

Product Information

MP80010-1 targets SMARCA2 in immunoassays as a matched antibody pair. Validated in Sandwich ELISA.

Capture antibody: SMARCA2-Specific Recombinant antibody, PBS Only (Capture) 85018-5-PBS (242511H4). 100 µg. Concentration 1 mg/mL.

Detection antibody: SMARCA2-Specific Monoclonal antibody, PBS Only (Detector) 60774-6-PBS (2C7H5). 100 µg. Concentration 1 mg/mL.

Unconjugated rabbit recombinant antibody and mouse monoclonal antibody pair in PBS only storage buffer at a concentration of 1 mg/mL, ready for conjugation. Created using Proteintech's proprietary in-house recombinant technology. Mouse monoclonal antibody and Rabbit Recombinant production enables unrivalled batch-to-batch consistency, easy scale-up, and future security of supply.

Matched antibody pairs are designed for use in a variety of assays and platforms that require matched antibody pairs.

Antibody use should be optimized for each application and assay.

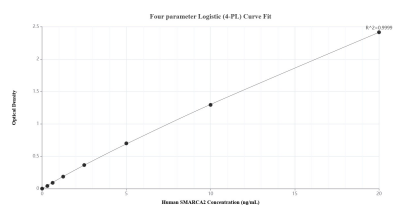
Storage

Storage:
Store at -80°C.
Storage buffer:
PBS only

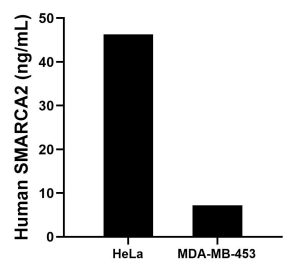
For technical support and original validation data for this product please contact:
T: 1 (888) 4PTGLAB (1-888-478-4522) (toll free in USA), or 1(312) 455-8498 (outside USA)
E: proteintech@ptglab.com
W: ptglab.com

This product is exclusively available under Proteintech Group brand and is not available to purchase from any other manufacturer.

Selected Validation Data



Sandwich ELISA standard curve of MP80010-1, Human SMARCA2 Hybrid Matched Antibody Pair - PBS only. 85018-5-PBS was coated to a plate as the capture antibody and incubated with serial dilutions of standard Ag25157. 60774-6-PBS was HRP conjugated as the detection antibody. Range: 0.313-20 ng/mL.



The mean SMARCA2 concentration was determined to be 46.30 ng/mL in HeLa cell extract based on a 0.90 mg/mL extract load and 7.23 ng/mL in MDA-MB-453 cell extract based on a 1.50 mg/mL extract load.