

# Human CD4 Magnetic Beads

Catalog Number: MS003

## Description

CD4 is a coreceptor with T cell receptor on T lymphocytes to recognize antigens displayed by an antigen presenting cell in the context of class II MHC molecules. 25%-65% human lymphocytes are CD4 positive. Human CD4 Magnetic Beads are used for isolation or depletion of human CD4 T lymphocytes from PBMC, whole blood, or other sample types. Following incubation with human CD4 antibody conjugated magnetic beads, the cell sample is placed on a magnet. CD4+ cells remain attached to magnetic beads after separation and can be used for downstream applications, such as in cell expansion, but are not suitable for flow cytometry analysis. CD4- cells remain in supernatant and can also be used for further applications.

## Components

MS003-10: 100µL 10mg/mL Human CD4 Magnetic Beads

MS003-100: 1mL 10mg/mL Human CD4 Magnetic Beads

## Package

10test/100test

## Storage

2-8°C

## Reactivity

Human

## Recommend usage

10µL Human CD4 Magnetic Beads for  $1 \times 10^7$  cells

For technical support and original validation data for this product please contact:

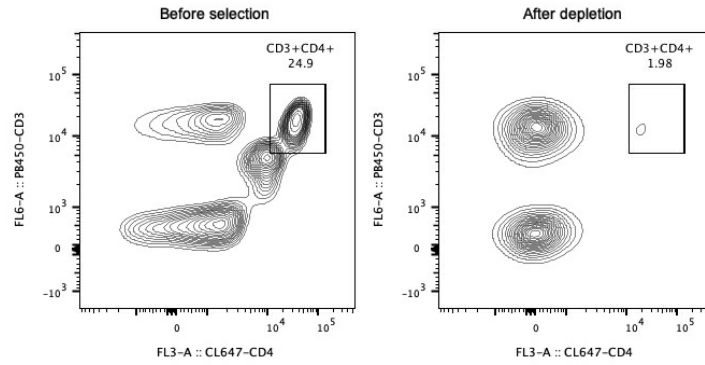
T: 1 (888) 4PTGLAB(1-888-478-4522)(toll free in USA), or 1(312) 455-8498(outside USA)

E: [proteintech@ptglab.com](mailto:proteintech@ptglab.com)  
W: [ptglab.com](http://ptglab.com)

This product is exclusively available under Proteintech Group brand and is not available to purchase from any other manufacturer.

## Validation Data

Representative example of depletion



Following depletion of CD4<sup>+</sup> cells, supernatant cell suspension was stained with PB450-CD3(clone: HIT3a) and CL647-CD4(clone: OKT4) antibodies. CD45 positive cells are gated in the analysis. Left panel: CD3+CD4<sup>+</sup> cells before selection. Right panel: CD3+CD4<sup>+</sup> cells after depletion. Human CD4 antibody conjugated magnetic beads are tested using PBMC from three donors.

For technical support and original validation data for this product please contact:

T: 1 (888) 4PTGLAB(1-888-478-4522)(toll free in USA), or 1(312) 455-8498(outside USA)

E: [proteintech@ptglab.com](mailto:proteintech@ptglab.com)  
W: [ptglab.com](http://ptglab.com)

This product is exclusively available under Proteintech Group brand and is not available to purchase from any other manufacturer.