

# Human CD19 Magnetic Beads

Catalog Number: MS005

## Description

CD19 is a 95kDa, type I transmembrane glycoprotein that belongs to the immunoglobulin superfamily. It is expressed by B cells and follicular dendritic cells and regulates B cell lineage commitment during hematopoietic stem cell differentiation. It is observed that 6%-23% human PBMC are CD19 positive. Human CD19 Magnetic Beads can be used for isolation or depletion of human CD19 B lymphocytes from PBMC, whole blood, or other sample types. Following incubation with human CD19 antibody conjugated magnetic beads, the cell sample is placed on a magnet. CD19+ cells remain attached to magnetic beads after separation and can be used for downstream applications, such as in expansion of cells, but are not suitable for flow cytometry analysis. CD19- cells remain in supernatant and could be used for further applications.

## Components

MS005-10: 100µL 10mg/mL Human CD19 Magnetic Beads

MS005-100: 1mL 10mg/mL Human CD19 Magnetic Beads

## Package

10test/100test

## Storage

2-8°C

## Reactivity

Human

## Recommend usage

10µL Human CD19 Magnetic Beads for  $1 \times 10^7$  cells

For technical support and original validation data for this product please contact:

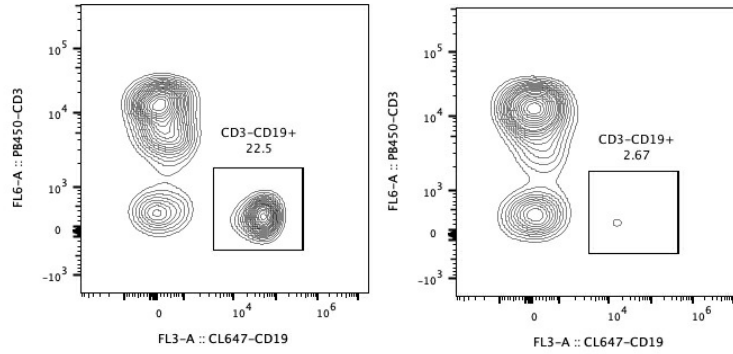
T: 1 (888) 4PTGLAB(1-888-478-4522)(toll free in USA), or 1(312) 455-8498(outside USA)

E: [proteintech@ptglab.com](mailto:proteintech@ptglab.com)  
W: [ptglab.com](http://ptglab.com)

This product is exclusively available under Proteintech Group brand and is not available to purchase from any other manufacturer.

## Validation Data

Representative example of depletion



Following depletion of CD19+ cells, supernatant cell suspension was stained with PB450-CD3(clone: HIT3a) and CL647-CD19(clone: SJ25C1) antibodies. CD45 positive cells are gated in the analysis. Left panel: CD3-CD19+ cells before selection. Right panel: CD3-CD19+ cells after depletion. Human CD19 Magnetic Beads are tested using PBMC from three different donors.

**For technical support and original validation data for this product please contact:**  
T: 1 (888) 4PTGLAB(1-888-478-4522)(toll free in USA), or 1(312) 455-8498(outside USA)  
E: [proteintech@ptglab.com](mailto:proteintech@ptglab.com)  
W: [ptglab.com](http://ptglab.com)

**This product is exclusively available under Proteintech Group brand and is not available to purchase from any other manufacturer.**