

Mouse/Rat Osteopontin/OPN Sandwich ELISA Kit Datasheet

Please read it entirely before use

Catalogue Number: KE10118

Size: 96T

Sensitivity: 15.5 pg/mL

Range: 78.1-5000 pg/mL

Usage: For the quantitative detection of mouse/rat Osteopontin/OPN concentrations in serum, plasma and cell culture supernatant.

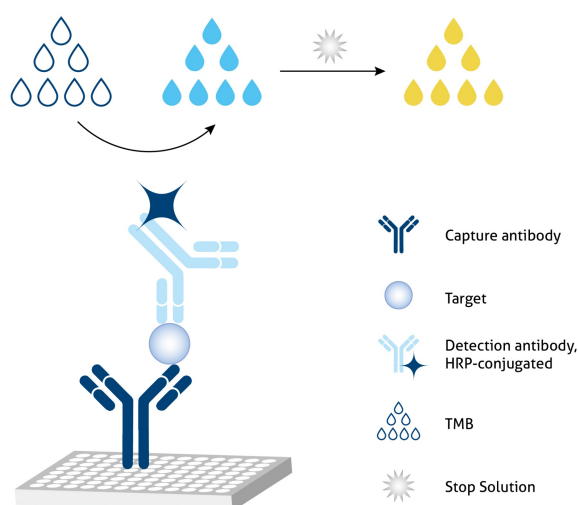
This product is for research use only and not for use in human or animal therapeutic or diagnostic.

Table of content	page
1. Background	3
2. Principle	3
3. Required Materials	3
4. Kit Components and Storage	4
5. Safety Notes	4
6. Sample Collection and Storage	4
7. Regent Preparation	5
8. Assay Procedure Summary	6
9. Validation Data	7
9.1 Standard curve	7
9.2 Precision	8
9.3 Recovery	8
9.4 Sample values	8
9.5 Sensitivity	8
9.6 Linearity	9
9.7 Specificity	9
10. References	9

1. Background

Osteopontin (OPN) is also named as 2AR, minopontin, bone sialoprotein 1, Spp1, Eta-1 and Op, and belongs to the osteopontin family. Osteopontin is major non-collagenous bone protein that binds tightly to hydroxyapatite. It is a highly phosphorylated glycoprophosphoprotein having acidic characteristics and rich in aspartic acid. And it acts as a cytokine involved in enhancing production of interferon-gamma and interleukin-12 and reducing production of interleukin-10 and is essential in the pathway that leads to type I immunity. OPN, a multifunctional protein, has important functions on cardiovascular diseases, cancer, diabetes and kidney stone diseases and in the process of inflammation, biomineralization, cell viability and wound healing. OPN is a pleiotropic glycoprotein expressed in various cell types in animals and in humans, including bone, immune, smooth muscle, epithelial and endothelial cells. Moreover, OPN is found in kidneys and urine.

2. Principle



Sandwich ELISA structure (Detection antibody labeled with HRP)

A capture antibody is pre-coated onto the bottom of wells which binds to analyte of interest. A detection antibody labeled with HRP also binds to the analyte. TMB acts as the HRP substrate and the solution color will change from colorless to blue. A stop solution containing sulfuric acid turns solution yellow. The color intensity is proportional to the quantity of bound protein which is measurable at 450 nm with the correction wavelength set at 630 nm.

3. Required Materials

- 3.1 A microplate reader capable of measuring absorbance at 450 nm with the correction wavelength set at 630 nm.
- 3.2 Calibrated, adjustable precision pipettes and disposable plastic tips. A manifold multi-channel pipette is recommended for large assays.
- 3.3 Plate washer: automated or manual.
- 3.4 Absorbent paper towels.
- 3.5 Glass or plastic tubes to prepare standard and sample dilutions.
- 3.6 Beakers and graduated cylinders.
- 3.7 Log-log or semi-log graph paper or computer and software for ELISA data analysis. A four-parameter logistic (4-PL) curve-fit is recommended.

4. Kit Components and Storage

Microplate - antibody coated 96-well microplate (8 well × 12 strips)	1 plate	Unopened Kit: Store at 2-8°C for 6 months or -20°C for 12 months. Opened Kit: All reagents stored at 2-8°C for 7 days. Please use a new standard for each assay.
Protein standard - 10000 pg/bottle; lyophilized	2 bottles	
Detection antibody, HRP-conjugated (100×) - 120 µL/vial*	1 vial	
Sample Diluent PT 1-ef - 30 mL/bottle. For mouse serum, plasma and cell culture supernatant.	1 bottle	
Sample Diluent PT 1B1-ef - 30 mL/bottle. For rat serum and plasma.	1 bottle	
Detection Diluent - 30 mL/bottle	1 bottle	
Wash Buffer Concentrate (20×) - 30 mL/bottle	1 bottle	
Tetramethylbenzidine Substrate (TMB) - 12 mL/bottle	1 bottle	
Stop Solution - 12 mL/bottle	1 bottle	
Plate Cover Seals	4 pieces	

* Centrifugation immediately before use

5. Safety Notes

- 5.1 Avoid any skin and eye contact with Stop Solution and TMB. In case of contact, wash thoroughly with water.
- 5.2 Do not use the kit after the expiration date.
- 5.3 Do not mix or substitute reagents or materials from other kit lots or other sources.
- 5.4 Be sure to wear protective equipment such as gloves, masks and goggles during the experiment.
- 5.5 When using an automated plate washer, adding a 30 second soak period following the addition of Wash Buffer to improve assay precision

6. Sample Collection and Storage

- 6.1 Serum: Allow blood samples to clot for 30 minutes, followed by centrifugation for 15 minutes at 1000×g. Clear serum can be assayed immediately or aliquoted and stored at -20°C. Avoid repeated freeze-thaw cycles.
- 6.2 Plasma: Use EDTA, heparin, or citrate as an anticoagulant for plasma collection. Centrifuge for 15 minutes at 1000×g within 30 minutes of collection. The plasma can be assayed immediately or aliquoted and stored at -20°C. Avoid repeated freeze-thaw cycles.
- 6.3 Cell Culture Supernatant: Remove particulates by centrifugation for 5 minutes at 500×g and assay immediately or aliquot and store samples at ≤ -20°C. Avoid repeated freeze-thaw cycles.

7. Regent Preparation

7.1 Wash Buffer (1X): If crystals have formed in the concentrate, warm to room temperature and mix gently until the crystals have completely dissolved. Add 30 mL of Wash Buffer Concentrate(20X) to 570 mL deionized or distilled water to prepare 1X Wash Buffer.

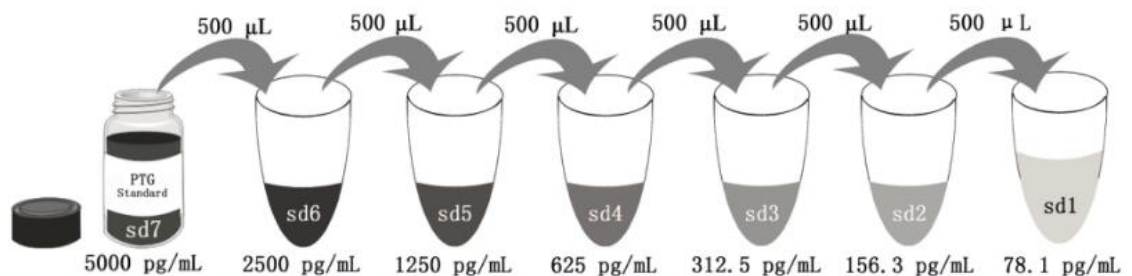
7.2 Detection Antibody, HRP-conjugated(1X): Dilute 100X Detection Antibody, HRP-conjugated 1:100 using Detection Diluent prior to assay. Suggested 1:100 dilution: 10 μ L 100X Detection Antibody, HRP-conjugated + 990 μ L Detection Diluent (Centrifuge the 100X Detection Antibody solution, HRP-conjugated for a few seconds prior to use).

7.3 Sample Dilution: Different samples should be diluted with corresponding Sample Diluent, samples may require further dilution if the readout values are higher than the highest standard OD reading. Variations in sample collection, processing and storage may affect the results of the measurement.

Recommended Dilution for different sample types: 1:10 or 1:20 is recommended for mouse serum and plasma; 1:16 or 1:32 is recommended for rat serum and plasma; 1:10 or 1:20 is recommended for cell culture supernatant.

7.4 Standard Serial Dilution:

For mouse serum, plasma and cell culture supernatant, add 2mL Sample Diluent PT 1-ef in protein standard. For rat serum and plasma, add 2mL Sample Diluent PT 1B1-ef in protein standard.



Add # μ L of Standard diluted in the previous step	—	500 μ L	500 μ L	500 μ L	500 μ L	500 μ L	500 μ L
# μ L of Sample Diluent PT 1-ef or PT 1B1-ef	2000 μL	500 μ L	500 μ L	500 μ L	500 μ L	500 μ L	500 μ L
	"sd7"	"sd6"	"sd5"	"sd4"	"sd3"	"sd2"	"sd1"

8. Assay Procedure Summary

Bring all reagents to room temperature before use (Detection antibody, HRP-conjugated can be used immediately). To avoid cross-contamination, change pipette tips between additions of each standard level, between sample additions, and between reagent additions. Also, use separate reservoirs for each reagent.

8.1 Take out the required number of microplate strips and return excess strips to the foil pouch containing the drying reagent pack and reseal; store at 4°C immediately. Microplate strips should be used in one week.

8.2 Preset the layout of the microplate, including control group, standard group and sample group, add 100 µL of each standard and sample to the appropriate wells. (Make sure sample addition is uninterrupted and completed within 5 to 10 minutes, it is recommended to assay all standards, controls, and samples in duplicate).

8.3 Seal plate with cover seal, pressing it firmly onto top of microwells. Incubate the plate for 2 hours at 37°C.

8.4 Wash

1) Gently remove the cover seal. Discard the liquid from wells by aspirating or decanting. Remove any residual solution by tapping the plate a few times on fresh paper towels.

2) Wash 4 times with 1X Wash Buffer, using at least 350-400 µL per well. Following the last wash, firmly tap plates on fresh towels 10 times to remove residual Wash Buffer. Avoid getting any towel fibers in the wells or wells drying out completely.

8.5 Add 100 µL of 1X Detection antibody, HRP-conjugated solution (refer to Reagent Preparation 7.2) to each well. Seal plate with cover seal and incubate for 40 minutes at 37°C.

8.6 Repeat wash step in 8.4.

8.7 Signal development: Add 100 µL of TMB substrate solution to each well, protected from light. Incubate for 15 to 20 minutes. Substrate Solution should remain colorless until added to the plate.

8.8 Quenching color development: Add 100 µL of Stop Solution to each well in the same order as addition of the TMB substrate. Mix by tapping the side of the plate gently. NB: Avoid skin and eye contact with the Stop solution.

8.9 Read results: Immediately after adding Stop solution read the absorbance on a microplate reader at a wavelength of 450 nm. If possible, perform a double wavelength readout (450 nm and 630 nm).

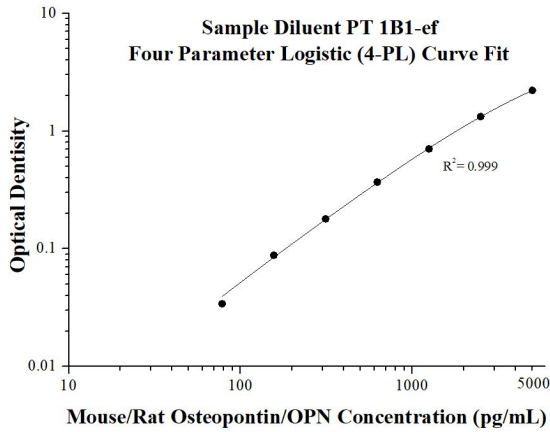
8.10 Data analysis: Calculate the average of the duplicate readings (OD value) for each standard and sample, and subtract the average of the zero standard absorbance. Construct a standard curve by plotting the mean absorbance for each standard on the y-axis against the concentration on the x-axis, use four-parameter logistic curve-fit (4-PL) analysis to do this. If the samples have been diluted, the OD readout from the standard curve must be multiplied by the dilution factor used.

Step	Reagent	Volume	Incubation	Wash	Notes
1	Standard and Samples	100 µL	120 min	4 times	Cover Wells incubate at 37°C
2	Diluent Detection antibody, HRP-conjugated Solution	100 µL	40 min	4 times	Cover Wells incubate at 37°C
3	TMB Substrate	100 µL	15-20 min	Do not wash	Incubate in the dark at 37°C
4	Stop Solution	100 µL	0 min	Do not wash	-
5	Read plate at 450 nm and 630 nm immediately after adding Stop solution. DO NOT exceed 5 minutes.				

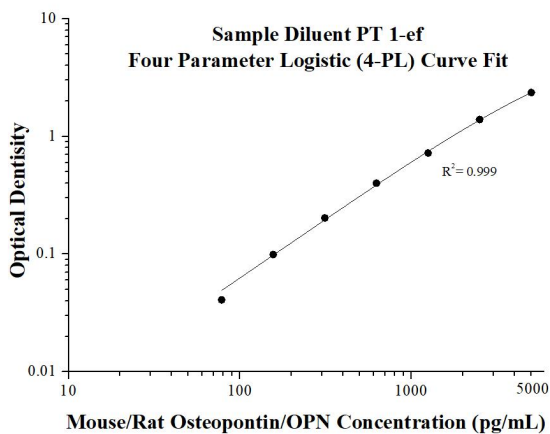
9. Validation Data

9.1 Standard curve

These standard curves are provided for demonstration only. A standard curve should be generated for each set of samples assayed.



(pg/mL)	O.D	Average	Corrected
0	0.0924 0.1046	0.0985	-
78.1	0.1245 0.1407	0.1326	0.0341
156.3	0.1915 0.1818	0.18665	0.08815
312.5	0.2902 0.2651	0.27765	0.17915
625	0.4731 0.4609	0.467	0.3685
1250	0.7981 0.8094	0.80375	0.70525
2500	1.4737 1.378	1.42585	1.32735
5000	2.3402 2.2831	2.31165	2.21315



(pg/mL)	O.D	Average	Corrected
0	0.1073 0.0939	0.1006	-
78.1	0.1405 0.1423	0.1414	0.0408
156.3	0.1998 0.1996	0.1997	0.0991
312.5	0.2989 0.3075	0.3032	0.2026
625	0.5008 0.5015	0.50115	0.40055
1250	0.8025 0.8415	0.822	0.7214
2500	1.5299 1.4506	1.49025	1.38965
5000	2.4369 2.4755	2.4562	2.3556

9.2 Precision

Intra-assay Precision (Precision within an assay) Three samples of known concentration were tested 20 times on one plate to assess intra-assay precision.

Inter-assay Precision (Precision between assays) Three samples of known concentration were tested in 24 separate assays to assess inter-assay precision.

Intra-assay Precision					Inter-assay Precision				
Sample	n	Mean (pg/mL)	SD	CV%	Sample	n	Mean (pg/mL)	SD	CV%
1	20	2,322.0	136.5	5.9	1	24	2,162.2	126.0	5.8
2	20	567.9	35.6	6.3	2	24	610.9	32.0	5.2
3	20	178.8	17.4	9.7	3	24	205.4	22.4	10.9

9.3 Recovery

The recovery of mouse/rat Osteopontin/OPN spiked to three different levels throughout the range of the assay in various matrices was evaluated.

Sample Type		Average% of Expected	Range (%)
Mouse serum	1:40	106	95-113
	1:80	96	87-106
Rat serum	1:64	98	86-111
	1:128	80	74-94
Cell culture supernatant	1:40	98	90-102
	1:80	100	87-123

9.4 Sample values

Serum - mouse serum and rat serum samples were evaluated for the presence of mouse/rat Osteopontin/OPN in this assay.

Sample Type	Mean (ng/mL)	Range (ng/mL)
Mouse serum (n=16)	32.0	6.2-53.0
Rat serum (n=7)	12.8	1.1-43.0

Cell Culture Supernatant - J774A.1 cells were cultured in DMEM supplemented with 10% fetal bovine serum. An aliquot of the cell culture supernate was removed, assayed for Osteopontin/OPN, and measured 19,999.2 pg/mL.

9.5 Sensitivity

The minimum detectable dose of mouse/rat Osteopontin/OPN is 15.5 pg/mL. This was determined by adding two standard deviations to the concentration corresponding to the mean O.D. of 20 zero standard replicates.

9.6 Linearity

To assess the linearity of the assay, samples were diluted with the appropriate **Sample Diluent** to produce samples with values within the dynamic range of the assay.

(The mouse serum samples were initially diluted 1:5. The rat serum samples were initially diluted 1:8. The cell culture supernatant samples were initially diluted 1:5.)

		Mouse serum (Sample Diluent PT 1- ef)	Rat serum (Sample Diluent PT 1B1- ef)	Cell culture supernatant (Sample Diluent PT 1-ef)
1:2	Average% of Expected	100	100	100
	Range (%)	-	-	-
1:4	Average% of Expected	114	99	103
	Range (%)	103-126	98-100	100-106
1:8	Average% of Expected	96	103	116
	Range (%)	81-111	99-108	115-117
1:16	Average% of Expected	79	113	106
	Range (%)	70-87	103-122	98-114

9.7 Specificity

This assay recognizes natural and recombinant mouse/rat Osteopontin/OPN.

The following factors prepared at 50 ng/mL were assayed and exhibited no cross-reactivity or interference.

Recombinant human:

Fibronectin

Vitronectin

Recombinant mouse:

Adiponectin

BMPR-1A

MMP-3

10. References

- [1] Icer MA and Gezmen-Karadag M. The multiple functions and mechanisms of osteopontin. Clin Biochem. 59:17-24 (2018).
- [2] Singh RP, et al. Definition of a specific interaction between the early T lymphocyte activation 1 (Eta-1) protein and murine macrophages in vitro and its effect upon macrophages in vivo. J Exp Med. 171(6):1931-42 (1990).
- [3] Ashkar S, et al. Eta-1 (osteopontin): an early component of type-1 (cell-mediated) immunity. Science. 287(5454):860-4 (2000).
- [4] Kaleta B. The role of osteopontin in kidney diseases. Inflamm Res. 68(2):93-102 (2019).