

For Research Use Only

# FcZero-rAb® PE-CoraLite® Plus 594 Anti-Human CD2 (TS1/8) Rabbit Recombinant Antibody

Catalog Number: PCL594-FcA65565



## Basic Information

Catalog Number:  
PCL594-FcA65565

Size:  
100 tests, 5 ul/test

Source:  
Rabbit

Isotype:  
IgG

GenBank Accession Number:  
BC033583

GeneID (NCBI):  
914

ENSEMBL Gene ID:  
ENSG00000116824

UNIPROT ID:  
P06729

Full Name:  
CD2 molecule

Calculated MW:  
351 aa, 39 kDa

Purification Method:  
Protein A purification

CloneNo.:  
TS1/8

Recommended Dilutions:  
FC: 5 ul per 10<sup>6</sup> cells in a 100 µl  
suspension

Excitation/Emission maxima  
wavelengths:  
496 nm, 565 nm / 604 nm

## Applications

Tested Applications:  
FC

Species Specificity:  
human

Positive Controls:

FC : human PBMCs,

## Background Information

CD2 is a cell surface glycoprotein present on a majority of thymocytes, all mature T cells and subset of NK cells but not on B lymphocytes. It is a pan T-cell marker. CD2 interacts with lymphocyte function-associated antigen (LFA-3/CD58) and CD48/BCM1 to mediate adhesion between T-cells and other cell types. CD2 is implicated in the triggering of T-cells, the cytoplasmic domain is implicated in the signaling function.

## Storage

Storage:

Store at 2-8°C. Avoid exposure to light. Stable for one year after shipment.

Storage Buffer:

PBS with 0.09% sodium azide and 0.5% BSA, pH7.3

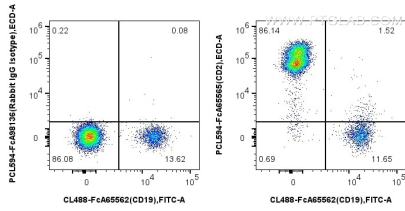
For technical support and original validation data for this product please contact:

T: 1 (888) 4PTGLAB (1-888-478-4522) (toll free  
in USA), or 1(312) 455-8498 (outside USA)

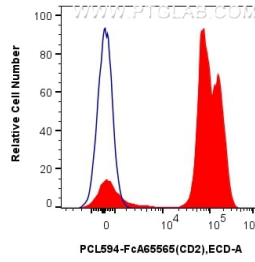
E: proteintech@ptglab.com  
W: ptglab.com

This product is exclusively available under Proteintech Group brand and is not available to purchase from any other manufacturer.

## Selected Validation Data



1x10<sup>6</sup> human PBMCs were surface stained with FcZero-rAb® CoraLite® Plus 488 Anti-Human CD19 (4G7), and 5 ul PE-CoraLite® Plus 594 Anti-Human CD2 (TS1/8) Rabbit RecAb (PCL594-FcA65565, Clone: TS1/8) or FcZero-rAb® PE-CoraLite® Plus 594 Rabbit IgG Isotype Control Recombinant Antibody (PCL594-FcA98136, Clone: 240953C9). Cells were not fixed. Lymphocytes were gated.



1x10<sup>6</sup> human PBMCs were surface stained with 5 ul PE-CoraLite® Plus 594 Anti-Human CD2 (TS1/8) Rabbit RecAb (PCL594-FcA65565, Clone: TS1/8) (red) or FcZero-rAb® PE-CoraLite® Plus 594 Rabbit IgG Isotype Control Recombinant Antibody (PCL594-FcA98136, Clone: 240953C9) (blue). Cells were not fixed. Lymphocytes were gated.