

For Research Use Only

FcZero-rAb® PE-CoraLite® Plus 594 Anti-Human CD20 (2H7) Rabbit Recombinant Antibody

Catalog Number: PCL594-FcA65575



Basic Information

Catalog Number:
PCL594-FcA65575

Size:
100 tests, 5 ul/test

Source:
Rabbit

Isotype:
IgG

GenBank Accession Number:
BC002807

GeneID (NCBI):
931

UNIPROT ID:
P11836-1

Full Name:
membrane-spanning 4-domains,
subfamily A, member 1

Calculated MW:
297 aa, 33 kDa

Purification Method:
Protein A purification

CloneNo.:
2H7

Recommended Dilutions:
FC: 5 ul per 10⁶ cells in a 100 µl
suspension

**Excitation/Emission maxima
wavelengths:**
496 nm, 565 nm / 604 nm

Applications

Tested Applications:
FC

Species Specificity:
human, monkey, non-human primates

Positive Controls:

FC : human PBMCs,

Background Information

CD20 is a 33-37 kDa transmembrane phosphoprotein belonging to the membrane-spanning 4A family (PMID: 3260267; 16785532). CD20 is a B-lymphocyte surface molecule that is widely expressed during B-cell ontogeny, from early pre-B-cell developmental stages until final differentiation into plasma cells (PMID: 7524522). CD20 functions as calcium-permeable cation channel (PMID: 7684739). It is involved in the regulation of B-cell activation, proliferation and differentiation (PMID: 7524522).

Storage

Storage:

Store at 2-8°C. Avoid exposure to light. Stable for one year after shipment.

Storage Buffer:

PBS with 0.09% sodium azide and 0.5% BSA, pH7.3

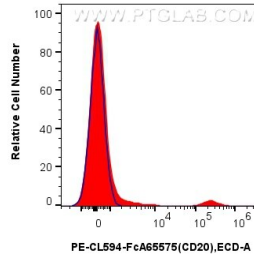
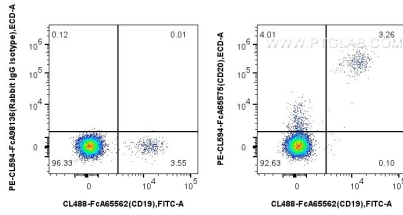
For technical support and original validation data for this product please contact:

T: 1 (888) 4PTGLAB (1-888-478-4522) (toll free
in USA), or 1(312) 455-8498 (outside USA)

E: proteintech@ptglab.com
W: ptglab.com

This product is exclusively available under Proteintech Group brand and is not available to purchase from any other manufacturer.

Selected Validation Data



1x10⁶ human PBMCs were surface stained with FcZero-rAb™ CoraLite® Plus 488 Anti-Human CD19 (4G7), and 5 ul PE-CL594 Plus Anti-Human CD20 (2H7) Rabbit IgG RecAb (PCL594-FcA65575, Clone:2H7) or FcZero-rAb™ PE-CoraLite® Plus 594 Rabbit IgG Isotype Control Recombinant Antibody (PCL594-FcA98136, Clone: 240953C9). Cells were not fixed. Lymphocytes were gated.

1x10⁶ human PBMCs were surface stained with 5 ul PE-CL594 Plus Anti-Human CD20 (2H7) Rabbit IgG RecAb (PCL594-FcA65575, Clone:2H7) (red) or FcZero-rAb™ PE-CoraLite® Plus 594 Rabbit IgG Isotype Control Recombinant Antibody (PCL594-FcA98136, Clone: 240953C9) (blue). Cells were not fixed. Lymphocytes were gated.