

For Research Use Only

# FcZero-rAb® PE-CoraLite® Plus 594 Anti-Human CD11b (ICRF44) Rabbit Recombinant Antibody

Catalog Number: PCL594-FcA65582



## Basic Information

**Catalog Number:**  
PCL594-FcA65582

**Size:**  
100 tests, 5 µl/test

**Source:**  
Rabbit

**Isotype:**  
IgG

**GenBank Accession Number:**  
BC096346

**GeneID (NCBI):**  
3684

**ENSEMBL Gene ID:**  
ENSG00000169896

**UNIPROT ID:**  
P11215

**Full Name:**  
integrin, alpha M (complement  
component 3 receptor 3 subunit)

**Calculated MW:**  
1152 aa, 127 kDa

**Purification Method:**  
Protein A purification

**CloneNo.:**  
ICRF44

**Recommended Dilutions:**  
FC: 5 µl per 10<sup>6</sup> cells in a 100 µl  
suspension

**Excitation/Emission maxima  
wavelengths:**  
496 nm, 565 nm / 604 nm

## Applications

**Tested Applications:**  
FC

**Species Specificity:**  
human

**Positive Controls:**

FC : human PBMCs,

## Background Information

Integrins are cell adhesion receptors that are heterodimers composed of non-covalently associated  $\alpha$  and  $\beta$  subunits (PMID: 9779984). CD11b, also known as Integrin alpha M or CR3A, belongs to the integrin alpha chain family. CD11b forms an  $\alpha/\beta$  heterodimer with CD18 (integrin  $\beta$ 2). CD11b/CD18 is implicated in various adhesive interactions of monocytes, macrophages and granulocytes as well as in mediating the uptake of complement-coated particles and pathogens (PMID: 9558116; 20008295). CD11b/CD18 is a receptor for the complement protein fragment iC3b, and is also a receptor for fibrinogen, factor X and ICAM1 (PMID: 2971974; 15485828).

## Storage

**Storage:**

Store at 2-8°C. Avoid exposure to light. Stable for one year after shipment.

**Storage Buffer:**

PBS with 0.09% sodium azide and 0.5% BSA, pH7.3

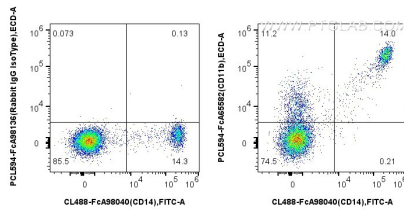
For technical support and original validation data for this product please contact:

T: 1 (888) 4PTGLAB (1-888-478-4522) (toll free  
in USA), or 1(312) 455-8498 (outside USA)

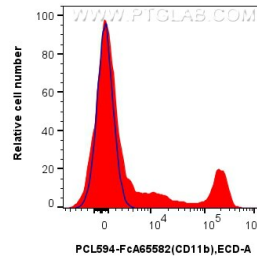
E: [proteintech@ptglab.com](mailto:proteintech@ptglab.com)  
W: [ptglab.com](http://ptglab.com)

**This product is exclusively available under Proteintech Group brand and is not available to purchase from any other manufacturer.**

## Selected Validation Data



1x10<sup>6</sup> human PBMCs were surface stained with CoraLite® Plus 488 Anti-Human CD14, and 5 ul PE-CoraLite® Plus 594 Anti-Human CD11b (ICRF44) Rabbit RecAb (PCL594-FcA65582, Clone: ICRF44) or Rabbit IgG Isotype Control RecAb (PCL594-FcA98136, Clone: 240953C9). Cells were not fixed.



1x10<sup>6</sup> human PBMCs were surface stained with 5 ul PE-CoraLite® Plus 594 Anti-Human CD11b (ICRF44) Rabbit RecAb (PCL594-FcA65582, Clone: ICRF44) (red) or Rabbit IgG Isotype Control RecAb (PCL594-FcA98136, Clone: 240953C9) (blue). Cells were not fixed.