

For Research Use Only

FcZero-rAb™ PE-CorLite® Plus 594 Anti-Human CD14 (26IC) Rabbit Recombinant Antibody

Catalog Number: PCL594-FcA65616



Basic Information

Catalog Number:
PCL594-FcA65616

Size:
100 tests, 5 µl/test

Source:
Rabbit

Isotype:
IgG

GenBank Accession Number:
BC010507

GeneID (NCBI):
929

ENSEMBL Gene ID:
ENSG00000170458

UNIPROT ID:
P08571

Full Name:
CD14 molecule

Calculated MW:
375 aa, 40 kDa

Purification Method:
Protein A purification

CloneNo.:
26IC

Recommended Dilutions:
FC: 5 µl per 10⁶ cells in a 100 µl
suspension

Excitation/Emission maxima
wavelengths:
496 nm, 565 nm / 604 nm

Applications

Tested Applications:
FC

Species Specificity:
human

Positive Controls:

FC : human PBMCs,

Background Information

CD14 is a 50-55 kDa glycosylphosphatidylinositol-anchored glycoprotein preferentially expressed on monocytes and macrophages, and at lower levels on granulocytes (PMID: 3385210; 2462937; 7685797). CD14 can also exist as a soluble protein. CD14 acts as a co-receptor for bacterial liposaccharides (LPS) (PMID: 1698311). It plays a major role in the inflammatory response of monocytes to LPS.

Storage

Storage:

Store at 2-8°C. Avoid exposure to light. Stable for one year after shipment.

Storage Buffer:

PBS with 0.09% sodium azide and 0.5% BSA, pH7.3

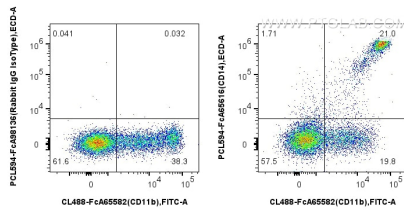
For technical support and original validation data for this product please contact:

T: 1 (888) 4PTGLAB (1-888-478-4522) (toll free
in USA), or 1(312) 455-8498 (outside USA)

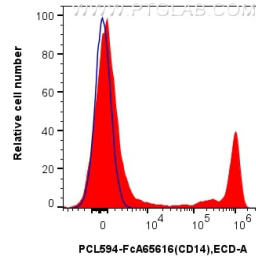
E: proteintech@ptglab.com
W: ptglab.com

This product is exclusively available under Proteintech Group brand and is not available to purchase from any other manufacturer.

Selected Validation Data



1x10⁶ human PBMCs were surface stained with CoraLite® Plus 488 Anti-Human CD11b (ICRF44) and 5 ul PE-CoraLite® Plus 594 Anti-Human CD14 (261C) Rabbit IgG RecAb (PCL594-FcA65616, Clone:261C), or 5 ul Rabbit IgG Isotype Control RecAb (PCL594-FcA98136, Clone: 240953C9). Cells were not fixed.



1x10⁶ human PBMCs were surface stained with 5 ul PE-CoraLite® Plus 594 Anti-Human CD14 (261C) Rabbit IgG RecAb (PCL594-FcA65616, Clone:261C) (red), and 5 ul Rabbit IgG Isotype Control RecAb (PCL594-FcA98136, Clone: 240953C9)(blue). Cells were not fixed.