

For Research Use Only

FcZero-rAb® PE-CoraLite® Plus 594 Anti-Human SLAM/CD150 Rabbit Recombinant Antibody

Catalog Number: PCL594-FcA98220



Basic Information

Catalog Number:
PCL594-FcA98220

Size:
100 tests, 5 ul/test

Source:
Rabbit

Isotype:
IgG

Immunogen Catalog Number:
EG1702

GenBank Accession Number:
NM_003037.5

GeneID (NCBI):
6504

UNIPROT ID:
Q13291-1
Full Name:
signaling lymphocytic activation
molecule family member 1

Calculated MW:
37kDa

Purification Method:
Protein A purification

CloneNo.:
241800B12

Recommended Dilutions:
FC: 5 ul per 10⁶ cells in a 100 µl
suspension

Excitation/Emission maxima
wavelengths:
496 nm, 565 nm / 604 nm

Applications

Tested Applications:
FC

Species Specificity:
human

Positive Controls:

FC : human PBMCs,

Background Information

Signaling lymphocytic activation molecule (SLAM, also known as SLAMF1 or CD150) is a 70-95 kDa transmembrane glycoprotein that belongs to the immunoglobulin gene superfamily. SLAM is constitutively expressed on peripheral blood memory T-cells, T-cell clones, immature thymocytes and a proportion of B-cells, and is rapidly induced on naive T-cells after activation. SLAM is involved in T cell stimulation and cytokine production, and may play an important role in the regulation of immune responses to pathogens.

Storage

Storage:

Store at 2-8°C. Avoid exposure to light. Stable for one year after shipment.

Storage Buffer:

PBS with 0.09% sodium azide and 0.5% BSA, pH7.3

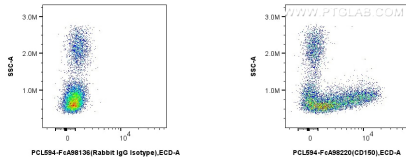
For technical support and original validation data for this product please contact:

T: 1 (888) 4PTGLAB (1-888-478-4522) (toll free
in USA), or 1(312) 455-8498 (outside USA)

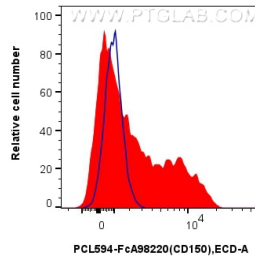
E: proteintech@ptglab.com
W: ptglab.com

This product is exclusively available under Proteintech Group brand and is not available to purchase from any other manufacturer.

Selected Validation Data



1x10⁶ human PBMCs were surface stained with 5 ul PE-CorLite® Plus 594 Anti-Human SLAM/CD150 Rabbit RecAb (PCL594-FcA98220, Clone: 241800B12) or FcZero-rAb® PE-CorLite® Plus 594 Rabbit IgG Isotype Control Recombinant Antibody (PCL594-FcA98136, Clone: 240953C9). Cells were not fixed.



1x10⁶ human PBMCs were surface stained with 5 ul PE-CorLite® Plus 594 Anti-Human SLAM/CD150 Rabbit RecAb (PCL594-FcA98220, Clone: 241800B12) (red) or FcZero-rAb® PE-CorLite® Plus 594 Rabbit IgG Isotype Control Recombinant Antibody (PCL594-FcA98136, Clone: 240953C9) (blue). Cells were not fixed.