

For Research Use Only

PE Anti-Human CD56 (MEM 188)

Catalog Number: PE-65067



Basic Information

Catalog Number: PE-65067	GenBank Accession Number: BC014205	Purification Method: Affinity purification
Size: 100tests , 10 µl/test	GeneID (NCBI): 4684	CloneNo.: MEM-188
Source: Mouse	Full Name: neural cell adhesion molecule 1	Excitation/Emission maxima wavelengths: 496 nm, 565 nm / 578 nm
Isotype: IgG2a, kappa		

Applications

Tested Applications:
FC

Species Specificity:
Human

Background Information

Neural cell adhesion molecule 1 (NCAM1, also known as CD56) is a cell adhesion glycoprotein of the immunoglobulin (Ig) superfamily. It is a multifunction protein involved in synaptic plasticity, neurodevelopment, and neurogenesis. NCAM1 is expressed on human neurons, glial cells, skeletal muscle cells, NK cells and a subset of T cells, and the expression is observed in a wide variety of human tumors, including myeloma, myeloid leukemia, neuroendocrine tumors, Wilms' tumor, neuroblastoma, and NK/T cell lymphomas.

Storage

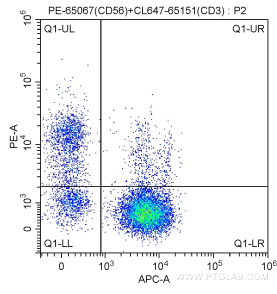
Storage:
Store at 2-8°C. Avoid exposure to light. Stable for one year after shipment.

Storage Buffer:
PBS with 0.1% sodium azide and a stabilizer.

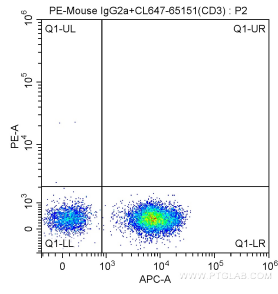
For technical support and original validation data for this product please contact:
T: 1 (888) 4PTGLAB (1-888-478-4522) (toll free in USA), or 1(312) 455-8498 (outside USA) E: proteintech@ptglab.com
W: ptglab.com

This product is exclusively available under Proteintech Group brand and is not available to purchase from any other manufacturer.

Selected Validation Data



1X10⁶ human peripheral blood lymphocytes were surface stained with CoraLite® Plus 647-conjugated Anti-Human CD3 (CL647-65151, Clone:UCHT1) and 0.2 ug PE Anti-Human CD56 (PE-65067, Clone: MEM 188). Cells were not fixed.



1X10⁶ human peripheral blood lymphocytes were surface stained with CoraLite® Plus 647-conjugated Anti-Human CD3 (CL647-65151, Clone:UCHT1) and 0.2 ug PE-Mouse IgG2a Isotype Control. Cells were not fixed.